

Published by San Diego Chapter 4
American Society of Professional Estimators

S.D. Mator

July 2010

Volume 8, Issue 11

ANNUAL AWARDS & BOARD INSTALLATION

DATE: Tuesday, July 20, 2010
TIME: 5:30 PM—Social Hour and
Check-in of Attendees
6:30 PM—Dinner service
Program immediately following dessert

PROGRAM:

**ANNUAL AWARDS & INSTALLATION
OF OFFICERS / DIRECTORS**

KEYNOTE SPEAKER:

**"THE CHALLENGES OF ESTIMATING &
CONSTRUCTING GREEN BUILDING PROJECTS"**

Walt Fegley, *President*
Reno Contracting, Inc.

IN-HOUSE TALK:

Eric Scheidlinger, *Estimator*
Reno Contracting, Inc.

LOCATION:

The Butcher Shop Steakhouse
5255 Kearny Villa Road, San Diego

COST: \$35⁰⁰ per person

*Cancellations must be received by NOON on Monday,
July 19th or no shows will be billed accordingly.*

[Click here for Dinner Mtg Reservation Policy](#)

RSVP: Steve Fisher at 760.639.8630
or Stephen.FisherFCG@cox.net

When reserving, please indicate your
ENTRÉE CHOICE ...
Prime Rib OR Salmon OR Vegetarian Pasta

July Program Notes: Annual Awards and Installation of Officers / Directors

Once a year, we take time out of our busy schedules to recognize members in San Diego Chapter #4 that have made a significant contribution to the local organization. On Tuesday, July 20th, we again will have that unique opportunity to honor such a group of deserving individuals. We ask for the Chapter to exhibit the same level of participation that we witnessed in June for the San Diego Zoo Site Tour and Dinner Meeting. Certificates of Appreciation will be presented to the Officers and Directors and our Executive Administrator

(continued on pg 3)

INSIDE THIS ISSUE ...

July Program Notes	1,3,7
From Our President	2,9
Efficient Sustainable Practices in Today's Buildings and Construction Environment (<i>in-house article</i>).....	4
ASPE Chapter 4's 2010 Scholarship Awards	4
Meet a Member of Your Chapter Board: Daniel Sackett, CPE	5
Tech Tips for the Estimating Profession	6
Meet Your New Chapter Members: Brad Benson	8
Welcome Our July Dinner Sponsor: Reno Contracting, Inc. ...	10
Become an ASPE Newsletter Sponsor or Advertiser	11
ASPE Membership	11
ASPE Mission Statement	11
San Diego Chapter Calendar of Events	12
2009-2010 Officers, Board of Directors, Committees	13
Corporate Sponsors & Monthly Advertisers	14
ATTACHMENT:	
ASPE Chapter 4's "Day at the Races" - August 14 th	15



Ed Wenz, E

Greetings from the ASPE National Convention in Grapevine Texas!

A busy four-day schedule at this year's Convention and my hats off to Dallas/Fort Worth Chapter #43 for putting on an excellent event and for their southern hospitality. As always, the Convention brings in representatives from most of the 62 chapters from all across the United States, and each of them brings their years of experience and expertise to the table to share with others.

Aside from the national and regional ASPE business, the Convention includes a series of chapter workshops and seminars to enhance chapter and professional development. Several of the professional seminars covered topics such as BIM, Legal Issues in our industry, as well as Ethics in Construction. Chapter workshops ranged from using Social

Media, the role of the Chapter Treasurer, to leadership and responsibilities of serving as a Board member. The most extensive offering was the accredited classes of the Estimating Academy. These included Conceptual Estimating, Preconstruction Management, Value Engineering, Estimating General Conditions, LEED Construction, Integrated Project Delivery and MasterFormat. Chapter 4 member Frank Young was the instructor for "Change Orders for Submission to General Contractors," and I was the instructor for "Preparing Effective Subcontractor Bid Proposals."

In addition to the great educational programs, ASPE National provides awards each year for several categories of excellence. The awards are based upon each chapter's award submittals and are judged by National Board members and Governors. Due to the great talent, commitment and depth of our Board of Directors and Officers, **ASPE Chapter 4 was awarded a total of 11 National and Regional awards!**

Southwest Region Awards

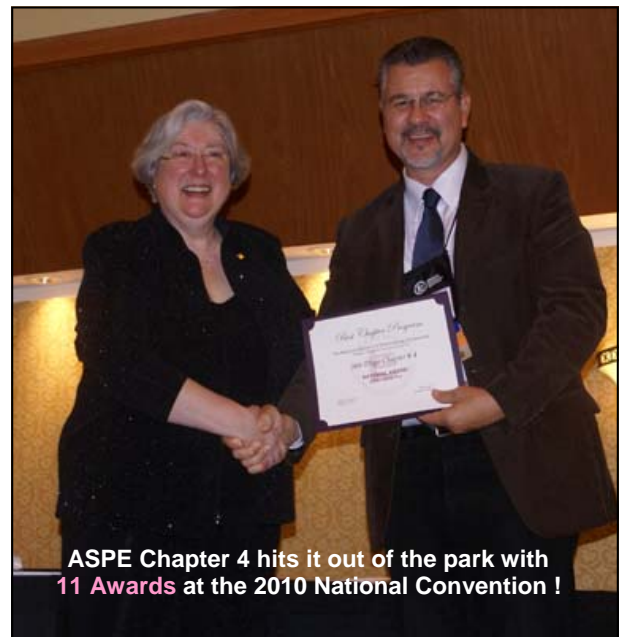
- Best Chapter Program
- Best Chapter Fundraiser
- Best Chapter Educational Activity
- Best Chapter Newsletter
- Best Chapter Website

National Awards

- Best Chapter Program
- Best Chapter Educational Activity
- Best Chapter Newsletter
- Best Chapter Website
- Superior Chapter Award
- National Recruitment Award

It was with great pride that we accepted each of these awards on behalf of all of our Chapter members. My deepest gratitude to all of our Chapter members for their participation, efforts and contributions for sustaining our Chapter and keeping it strong.

[\(continued on pg 9\)](#)



ASPE Chapter 4 hits it out of the park with **11 Awards** at the 2010 National Convention !

ASPE National President Paulette Rutlen
and San Diego Chapter 4 President Ed Wenz

San Diego Chapter 4 Is the One to Beat!

and Website Administrator who served with distinction during the difficult past year. These people were challenged in trying to balance work and personal responsibilities in order to perform their various assigned duties on behalf of San Diego Chapter #4. In addition, awards will be presented to a select cadre of individuals to acknowledge their exceptional efforts as follows:


- “Jess Sisk Award” for Outstanding Committee Chair
- “Larry Kian Award” for Outstanding Service to the Chapter
- “President’s Award” for Outstanding Dedication
- Officer-of-the-Year for Outstanding Chapter Officer
- “Special President’s Award” for Noteworthy Contributions to the Chapter
- “Al Vallin Award” for Estimator-of-the-Year
- President’s Plaque with Gavel

We will be rewarding our staff dynamic duo with a token of our appreciation for their ongoing extraordinary service and dedication.

As part of the proceedings, we invite a notable construction personality to address the audience with a timely topic. Our keynote speaker will be Walt Fegley, President of member-firm Reno Contracting, Inc. He is originally from the Philadelphia area, has been employed by and managed concrete/masonry contracting firms, has served in the Peace Corps building teacher housing and rural schools in West Africa, and has worked for the World Bank. Walt is a former member of ASPE while sharpening his skills in estimating, and was active on our Board of Directors. In 1989, he joined Matt Reno to assist with the start-up of his company. He is currently on AGC San Diego Chapter’s Board of Directors, chairs its Environment Stewardship Committee, and has attained the LEED® AP credentials. We will have the privilege of hearing a knowledgeable individual talk about “The Challenges of Estimating and Constructing Green Building Projects.”

The market for green, environmentally friendly construction and products is evolving at a rapid pace. According to the Urban Land Institute, green building is “the practice of increasing the efficiency with which buildings use resources – energy, water, and materials – while reducing building impacts on human health and the environment during the building’s lifecycle.” In 2008, San Diego ranked 15th nationally in registered and certified LEED buildings. It may not surprise you, but our “tree hugging” friends to the north in Portland, Oregon, took down the #1 spot, and continue to take an active approach to this issue. One of the most effective and more popular strategies to encourage green building involves providing structural and financial incentives in the marketplace. The

[\(continued on pg 7\)](#)



Casper Company
Core Drilling
Concrete Cutting
Demolition

Ken Ringer
(619) 589-6001
(619) 589-7158 Fax
(619) 529-4985 Pager
(619) 284-3794 Home


3825 Bancroft Drive / Spring Valley, CA 91977 ☑ Lic. No. 478960



Todd Caha, CPE
Senior Estimating Manager

Baker Electric, Inc.
4 Generations since 1938

1298 Pacific Oaks Place • Escondido, CA • 92029
858.566.1980 • 760.745.2001 • Fax 760.745.0292
Direct 760.690.5142
tcaha@baker-electric.com



Tim Lackey
President

P.O. Box 1122
Fallbrook, CA 92088

Phone: (760) 728-2981
Fax: (760) 728-5781
Cell: (619) 520-5576
tlackey@trinitygrading.com
www.trinitygrading.com

TRINITY GRADING, INC.
Lic.# 847643

Efficient Sustainable Practices in Today's Buildings and Construction Environment

*by Eric Scheidlinger, Estimator
LEED@ AP / Manager, Efficient Sustainable Practices
Reno Contracting Inc. / Reno ESP*



Eric Scheidlinger, E

As new construction projects hit the brakes and “green” pulled to the forefront of the commercial building industry, the leadership team at Reno Contracting pondered how sustainability could result in business opportunity. At this same time, news was released that, as part of the stimulus package, the federal and state government had set aside billions of dollars to implement sustainability and energy-efficiency projects in existing buildings. Through incentives, rebates, and attractive financing options, the government had positioned sustainability upgrades in the existing building market as a key revenue source for commercial building contractors in California. With this in mind, Reno Contracting decided that it was time to turn the company focus to existing buildings.

In 2009, Reno Contracting introduced ESP (Efficient Sustainable Practices) as a new division focused on providing sustainability solutions for the existing building market. ESP’s mission is to provide training, consulting and management services aimed at creating efficient buildings. ESP guides clients through the facility optimization process by applying a proprietary “Roadmap to Efficiency and Sustainability” which provides a clear path to building performance based upon return

on investment. This is accomplished by implementing the Department of Energy (DOE) best practice of applying the “whole building performance” approach which allows clients to evaluate, develop and execute strategies that meet their sustainability goals and budgets.

ESP works with the region’s best minds in sustainability to be able to provide a wide breadth of services, including energy audits, retro-commissioning, energy modeling, water and energy-efficiency upgrades, and renewable energy generation. ESP strives to show the commercial building industry that not only is sustainability a positive for the environment, but it provides a source for revenue in even the toughest of economic times. ■

ASPE Chapter 4's 2010 Scholarship Awards

by Dan Luckhardt, Chapter 4 Scholarship Committee Chair

The American Society of Professional Estimators San Diego Chapter 4 is pleased to present this year’s recipients of the 2010 Scholarship Award. On behalf of the Scholarship Committee, we are honored to recognize three individuals who have illustrated a strong desire to continue their education while remaining active in our industry. The winners of the 2010 ASPE Chapter 4 Scholarship Award for continuing their education are as follows:

Yusef Masjedi

William Morrissey

Devin Ulibarri

Each individual will receive their scholarship award at our Tuesday, July 20th Awards Dinner. Please make a point to attend and meet the individuals in person. I am absolutely positive you will be impressed. Each individual is working full time while attending a local university. Their years of work experience exceeds 26 years combined. Their goals include becoming a register engineer, receiving a graduate degree, and working in the field of cost estimating. These individuals are raising the bar in our community, and their recognition is well deserved.

It simply goes without saying, “This is ASPE.” The hard work of our local Chapter’s Board of Directors, the many individuals involved in fundraising programs, and most importantly all the members supporting a simple cause, ‘giving back’ to our community. This would not be complete without your attendance at the Awards Dinner. Please support the Scholarship Committee and the many individuals who have made it possible to make the funds available to this year’s recipients.

Henry Ford once said, “Whether you think you can, or whether you think you can’t, you’re right.” Please attend our Awards Dinner and meet the Scholarship Award recipients who are the next (wave) of professionals in our industry. They not only *think* they can, they *know* they can. See you there! ■

Meet Your Chapter Board Members ...

Focus on DANIEL W. SACKETT, CPE

Estimating Manager California Comfort Systems



Daniel Sackett, CPE

Dan Sackett has been a member of San Diego Chapter 4 since 2002.

Dan spent his first 11 years of life in Minnesota, moving to Nebraska in 1959 where he graduated from a small town high school in 1966 (32 students in the graduating class). After high school, Dan attended Colorado State University, and in 1973 he graduated with a BS degree in Mechanical Engineering.

In order to help pay for his schooling, Dan started his construction career in 1970 as a project engineer/draftsman with US Engineering Co. in Loveland, Colorado. In 1976, his company moved him to Reno, Nevada, as Assistant Project Manager on the construction of the 987-room, 27-story, 1,000,000 sq. ft MGM Grand Hotel. In 1983, Dan moved to Phoenix, Arizona, as Division Manager for United Electrical and Mechanical. In 1994, Dan accepted a position of Chief Estimator for Harris

Mechanical in St. Paul, Minnesota. Finally in 2002 Dan moved back to the southwest, accepting the Estimating Manager position with California Comfort Systems.

Dan has worked in the mechanical construction industry for 40 years. His extensive tenure ranged from project engineer to project manager to division manager to estimating manager. As project manager, Dan has worked on a wide variety of projects ranging from office buildings, to hospitals to high-tech facilities and to waste water and fresh water treatment plants. Now as estimating manager and head of this department, Dan's past experience has allowed him to accurately estimate public, private, and design build projects and is responsible for the preparation and presentation of schematic, design development, budget and conceptual estimates.

Dan received his CPE in 2006 and has been an ASPE Board member since 2003, currently holding the position of Second Vice President.

Thanks, Dan, for your many years of service to ASPE.

Ed Wenz, E

ASPE San Diego Chapter 4
President 2009-2010

RISE AND SHINE!

From Riser to Fixture, a Complete Plumbing Solution

FlowGuard Gold®/Corzan® CPVC plumbing systems provide superior durability and, unlike metallic systems, will not pit, scale or corrode, regardless of water quality. Nearly 50 years of proven performance back FBC™ Building Solutions CPVC piping systems which have been successfully installed in numerous commercial buildings including hotels, hospitals, schools, universities and high-rise applications.

Benefits include:

- **Stable Material Costs** – projects stay on budget
- **Ease of Installation** – lightweight with a fast, reliable joining system
- **Maintained Water Quality** – no concerns regarding copper leaching
- **Quiet Operation** – 4 times quieter than copper systems
- **Reduced Condensation** – virtually eliminates the risk of costly drip damage
- **CA Code Approved** – for commercial and residential solutions

Visit www.fbcbuildingsolutions.com or call Jeff Landon at 858-386-3674 for more information.

FBC Building Solutions

® is a registered trademark of The Lubrizol Corporation.
™ is a trademark of The Lubrizol Corporation.
© The Lubrizol Corporation 2009, all rights reserved.

Tech Tips for the Estimating Profession

by Ed Wenz, E – Reno Contracting, Inc.



Ed Wenz, E

This Month's Topic: BID INVITATION PROGRAMS AND MANAGING YOUR CONTRACTOR DATABASE

Most bid solicitations these days take place through email and web-based "Invitation to Bid" programs, also known as ITB's. It wasn't too long ago when general contracting firms would use programs such as Bid Fax that would send out several hundreds of bid invitations via fax where it would take up a dedicated phone line and approximately 36 to 48 hours to complete. Today, the same is done nearly instantaneously with the use of web-based ITB programs. Perhaps the greatest addition is the ability to post the plans and specifications for viewing and downloading.


As a result of general contractors expanding into different markets and regions, the subcontractor lists have grown significantly in addition to growing geometrically with extended levels of search options. This in turn demands that each record of a contractor or vendor now requires many more fields of information that will support the program's ability to effectively return the desired and accurate results of the search criteria.

The once basic task of sending bid invitations to an address book has now become a vital and routine maintenance task for any contractor's success. This list has also evolved into a prequalification process where any entry must initially meet or exceed defined criteria before it can ever be used in the first place. Once any database includes several hundred entries with multiple fields, a built-in management system becomes vital for it to function efficiently. Some of the many fields requiring input are License #, Bonding Capacity, Bond Rate, Trade, CSI 05 & 04, any Minority Status, Certification # and Expiration Dates, all contact information and email addresses, Project Types, etc. All of this and much more, including areas of work (whether they are broken down by state, regions, and cities or even by zip code).

Many newer products will allow subcontractors to update portions of their own company information and other required data. One primary area that often requires oversight by the general contractor are the defined specification sections under which each subcontractor is named. General contractors will often group subcontractors into a limited number of groups for easier management. An example would be a special group named Landscape and Irrigation #02901 instead of including the 10 to 15 more granular sections that may be used by a specialty contractor.

Nearly all of these programs are updated regularly with new management tools and often go unused because the advanced features become too complicated to use or take too much retraining time. Whatever you do, it is always best to review any new features and to at least be aware of them. Because of this ever-evolving web- and cloud-based technology, it's always good to review what's available on the market every two to three years to see if your own choice of an ITB program is keeping up with the competition in both technology and pricing.

If you have any topics you would like to have addressed or have input on, please forward them to Ed Wenz at ewenz@renocon.com. ■



CONSTRUCTION ANALYSTS, INC.


MIKE ADAMS, CPE
SENIOR ESTIMATOR

2225 FARADAY AVENUE, SUITE A
CARLSBAD, CA 92008

email: madams410@cox.net

(760) 431-9555
(760) 431-7512
(619) 449-2995
(619) 596-1978

6155 CORNERSTONE COURT, SUITE 110
SAN DIEGO, CA 92121



Madsen, Kneppers & Associates, Inc.
Construction Consultants & Engineers

DONALD W. ELDER, CPE

TEL 858.597.0383
CELL 858.722.2787

FAX 858.597.0387
DELDER@MKAINC.COM

800.822.6624 :: WWW.MKAINC.COM

former category includes expedited review/permitting processes and density and height bonuses, while the later classification incorporates tax credits, fee reduction/waivers, and grants.

The November 2009 *California Construction* magazine, published by McGraw-Hill Construction, carried a cover story on "Green Building Innovations." The Cathedral Hill Hospital expansion in San Francisco and the UCSD student housing high-rise on the La Jolla campus were featured projects. The City of San Diego passed a Sustainable Building Policy on May 18, 2010, and the County of San Diego has a similar Green Building Incentive Program. San Diego State University has begun offering a Professional Certificate in Green Building Construction, and ASPE's online classes have five courses dedicated to Green Construction in the current curriculum.

Walt Fegley's presentation will cover the following subjects:

- The Estimator – The Company's Core
- The Construction Market Today
- The New Sustainable Economy
- The Price of Environmental Stewardship
- Economical Future of Construction
 - Where Are We Going?
 - When Will We Get There?

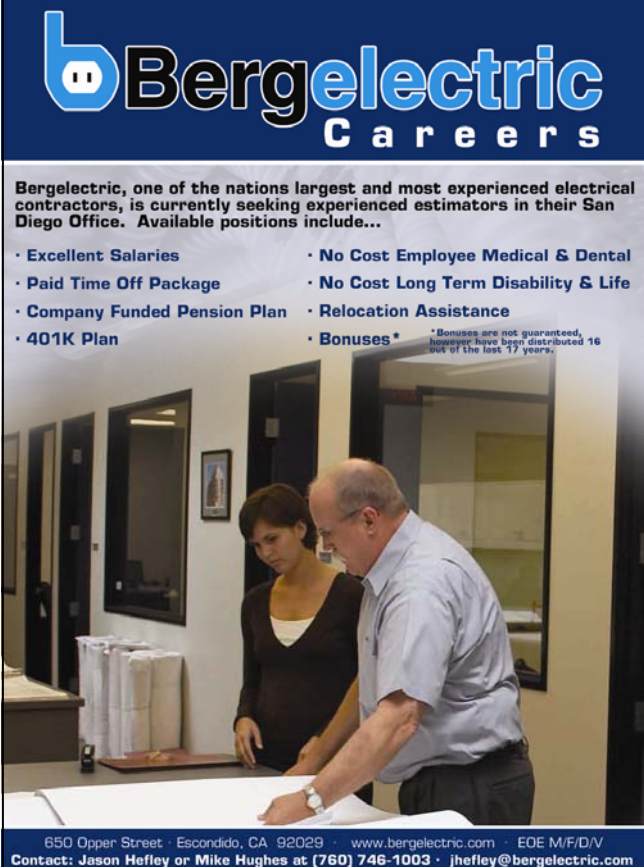
Chapter 4 member Eric Scheidlinger will be the in-house speaker who will complement Walt's talk. Green building is here to stay! Despite the recession, maybe even because of it, the industry is focused on improving sustainable design and construction with continued innovative means and methods. Don't miss this chance to learn more about this new technology.

Join the crowd on Tuesday, July 20th for this important function at the Butcher Shop Steakhouse Restaurant. Attendees can choose from Prime Rib, Salmon, or Vegetarian Pasta at the normal cost of \$35.00 per person. Spouses, significant others, and guests, as always, are encouraged to participate in this annual event. Following the program, Chapter Awards will be presented to the deserving recipients. Paulette Rutlen, current National President, will be the Installing Officer to administer the oath of office to the new 2010-2011 Officers and Directors.

Contact Steve Fisher to make your reservations today:

Telephone: 760.639.8630
Email: stephen.fisherFCG@cox.net

Frank E. Young, FCPE
O'Connor Construction Management, Inc.
1st Vice President and Programs Chair
ASPE San Diego Chapter 4



Bergelectric
Careers

Bergelectric, one of the nations largest and most experienced electrical contractors, is currently seeking experienced estimators in their San Diego Office. Available positions include...

- Excellent Salaries
- Paid Time Off Package
- Company Funded Pension Plan
- 401K Plan
- No Cost Employee Medical & Dental
- No Cost Long Term Disability & Life
- Relocation Assistance
- Bonuses* *Bonuses are not guaranteed, however have been distributed 16 out of the last 17 years.

650 Upper Street · Escondido, CA 92029 · www.bergelectric.com · EOE M/F/D/V
Contact: Jason Hefley or Mike Hughes at (760) 746-1003 · jhefley@bergelectric.com



US CONCRETE
PRECAST GROUP

Gordon Pettis
Chief Estimator
gpettis@us-concrete.com

2735 Cactus Road
San Diego, CA 92154
Direct: (619) 240-8020
Tel: (619) 240-8000
Cell: (619) 843-3850
Fax: (619) 661-1038
www.sdpc.com

PROVIDING INNOVATIVE SOLUTIONS, QUALITY, AND SERVICE

Meet Your New San Diego Chapter Members ...

Focus on BRAD BENSON – SQUIRES-BELT

As a regular feature of our ASPE Chapter 4 newsletter, we would like to introduce the membership to new member Brad Benson, owner of Squires-Belt Material Company.



Brad Benson

Brad is the fourth generation owner of Squires-Belt Material Company, which was founded in 1913 by his great-grandfather Elmer **Belt**. They have built a strong reputation in the market based upon strong business ethics, integrity and solid personal relationships with their customers, their employees and the community. **Customer Delight** is what Brad says they strive for on every invoice.

Brad is past President of the San Diego Executives Association (1997 & 2005), and past President of the Construction Specifications Institute (CSI), San Diego Chapter (2007).

Brad is a native San Diegan. He graduated from Valhalla High School in El Cajon, and has a B.A. from the University of California, Irvine. Brad also spent 4 years as a territory manager for National Gypsum Company in Northern California, and spent 2 years managing San Diego Cold Storage's National City branch.

Brad lives in Chula Vista with his wife of seven years, Elizabeth (Liz), and two-year-old son, Brock. According to Brad, quality family time is his #1 priority outside of work, but he still can find time to play a little golf, mountain bike ride, swim, and occasionally drive his 1968 Mustang convertible.

On behalf of San Diego ASPE Chapter 4, I would like to welcome Brad into our family and also say we look forward to his active participation in our Chapter.

Larry Hendrick, CPE, LEED® AP
barnhart Balfour Beatty
 ASPE San Diego Chapter 4 Membership Chair



Brad (right) with his father and predecessor John Benson



"The Boys": Brad, son Brock, and father John

ATI
 AMERICAN TECHNOLOGIES, INC.

858/530-2400 Office
 866/400-9353 Toll Free
 858/530-2401 Fax
 760/250-7950 Cell

SAN DIEGO OFFICE
 8444 Miralani Drive
 San Diego, CA 92126

Pat Riley
 Project Manager
 priley@amer-tech.com

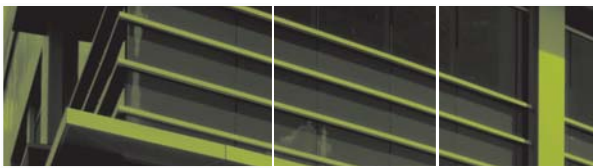
www.amer-tech.com
 License #571784

Last month's site tour and dinner meeting of the ***Elephant Odyssey at the San Diego Zoo*** was a great success with better-than-average attendance. It is rare to be able to see any of the zoo's newly constructed exhibits, along with a briefing on its construction and estimating challenges. We hope you found it to be educational. Thanks to all who attended. I would also like to add that a large number of members and their guests committed to attend at the last minute. Our goal is always to accommodate the largest group possible for any of our dinner programs, although it becomes difficult to coordinate many logistical aspects of late additions for the purposes of seating and meals. Please help us to better serve all of our members and guests by notifying us as early as possible of your plans to attend.

Our next meeting on Tuesday, July 20th will be our annual Installation of Officers and Chapter Awards Dinner. Our keynote speaker will be Walt Fegley, President of Reno Contracting Inc., who will discuss "The Challenges of Estimating and Constructing Green Building Projects" and how they are quickly becoming a major factor in many of today's construction projects, whether new or existing. Please join us by reserving your seat *early* for this major event. We look forward to seeing you all there at the preceding social hour.

Ed Wenz, E
Reno Contracting, Inc.
President 2009-2010
ASPE San Diego Chapter 4





RENO CONTRACTING

RENO ESP



RENO ESP

As an active U.S. Green Building Council (USGBC) member dedicated to sustainable building and design, Reno Contracting is a leading proponent of the latest “green-design” technology and practices. Reno Contracting was ranked in the top 100 Green Contractors nationwide in 2008. We currently have eleven (11) LEED AP’s (Accredited Professionals) on staff who work to meet the USGBC’s LEED requirements on their projects.

To focus our efforts on the sustainable building movement we have created Reno ESP (Efficient Sustainable Practices). Reno ESP is a new, multi-disciplinary group formed within Reno Contracting, one of Southern California’s top Green general contractors. Reno ESP’s mission is straightforward: to provide the sustainable building services required to enhance operating and cost efficiencies of both new and existing structures, while simultaneously contributing to the well-being of the environment. By helping to make buildings more attractive, economic and sustainable, our work benefits owners, tenants and the communities they serve.

Reno ESP combines our own LEED building expertise, with the insight of the region’s preeminent design, mechanical and electrical engineering and solar energy planners, to deliver practical solutions to often-complex challenges.

RENO CONTRACTING

Matt Reno founded Reno Contracting in 1993 on the principles of old-fashioned hard work and hiring the best personnel in the industry. With a long list of fully satisfied clients, Reno Contracting has proved to be one of the leading build-to-suit general contractors in Southern California.

Reno has the in-depth expertise to navigate any project to success—from simple structures to more complex—and uses the latest construction technologies to save you time and money. We offer the following services to meet the important needs of our clients:

- General Contracting
- Construction Management
- Preconstruction & Estimating
- LEED Construction for New and Existing Structures
- Quality Assurance Program
- ADA Compliance Assistance

PROJECT TYPES

- Commercial
- Biotech
- Technology
- Healthcare
- Hospitality
- Retail
- Industrial
- Tenant Improvements
- LEED



“We are committed not only to the mutual benefit of our clients and subcontractors but also our employees and their families, our community and the environment.”

—Eric Scheidlinger, LEED AP, Manager Efficient Sustainable Solutions, Reno Contracting





Become an ASPE Newsletter Sponsor or Advertiser

\$350 CORPORATE SPONSORSHIP, includes:

- Sponsor Recognition in each of the 12 Monthly Newsletters
- Includes a Hot Link to Either Your Website or Email
- A Full-Page Sponsor Profile in 1 Issue

MONTHLY ADVERTISEMENT:

12 Mo. Issues – 1/4-Page Ad for **\$450**
OR

12 Mo. Issues – Business Card for **\$200**

EMPLOYMENT AD:

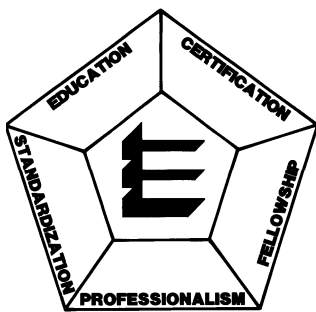
\$50 per month (FREE to ASPE Members)

FOR MORE INFORMATION:

Contact **LAURA PARKER, CPE**

619.906.2867

OR laurap@roel.com



ASPE MISSION STATEMENT

The American Society of Professional Estimators serves construction estimators by providing education, fellowship and the opportunity for professional development.

ASPE Membership

An accurate cost estimate is the first of many key components of a successful construction project. Plan interpretation, labor and material costs, scheduling costs, and level of difficulty recognition are a fraction of the skills necessary to become a successful estimator.

Why join the American Society of Professional Estimators? ASPE is the most recognized and credentialed group of construction cost professionals in our nation's construction industry. ASPE provides education, industry information, and fellowship to all levels of our members. It is made up of professionals of several different classifications.

- A- **Estimator**—shall have at least five years' experience as an estimator in one or more of the construction estimating disciplines.
- B- **Constructor**—shall be an active construction professional experienced in one or more of the construction disciplines with at least 5 years' experience.
- C- **Associate Member**—is a Member with less than 5 years of experience as an estimator or an active construction professional. When the Member achieves 5 years of experience, the Member shall be given one of the Member classifications listed above.

One of the ultimate goals of a member in ASPE is to achieve status as a "Certified Professional Estimator," otherwise know as "CPE." CPE status is recognized by Builders, Government Agencies, Developers, and many other Corporate entities as the highest level of qualification as an estimator. Educational training is available to become part of this elite group of professionals.

ASPE San Diego Chapter 4 is perennially recognized as one of the top chapters of the nation's 50 chapters. The local chapter meets on the third Tuesday of each month. This general membership meeting offers education and insight into our industry. Each membership meeting is highlighted by presentations and guest speakers, with information pertinent to our ever-changing industry.

If you would like to become part of this exciting group of professionals, please contact Larry Hendrick at lhendrick@barnhart-balfourbeatty.com or 858.385.8200 or 760.310.9207. ■

ASPE San Diego Chapter 4

CALENDAR OF EVENTS

◆ **Wednesday thru Saturday, July 7-10, 2010**

2010 ASPE Estimating Academy and National Convention

Location: Hilton DFW Lakes Executive Conference Center
Grapevine, Texas

◆ **Tuesday, July 20, 2010**

ASPE San Diego General Membership Dinner Meeting

Program: Awards and Installation Dinner

Keynote: Walt Fegley, President

Speaker: Reno Contracting, Inc.

Location: The Butcher Shop Steakhouse
5255 Kearny Villa Road, San Diego

◆ **Tuesday, July 27, 2010—5:30 PM**

ASPE San Diego Board of Directors' Meeting

Location: Reno Contracting, Inc.
1450 Frazee Road, Suite 100

◆ **Saturday, August 7, 2010—8:00 AM**

ASPE San Diego Board of Directors' Annual Retreat

Location: Reno Contracting, Inc.
1450 Frazee Road, Suite 100

◆ **Saturday, August 14, 2010**
2:00 PM (1st Post Time)

ASPE San Diego Chapter 4 "Day at the Races"

Location: Del Mar Thoroughbred Club's Clubhouse Terrace Restaurant

Chairman: Rex Edmonds, CPE

[CLICK HERE FOR FLYER](#)

◆ **Tuesday, August 17, 2010**

ASPE San Diego General Membership Dinner Meeting

Program: The Green Build—
Lindbergh Field Upgrades

Speaker: Bryan Enarson - Vice President, Development - San Diego County Regional Airport Authority

In-House Speaker: Hendrik Degenaar, CPE
Gilbane Building Co.

Location: The Butcher Shop Steakhouse
5255 Kearny Villa Road, San Diego

◆ **Tuesday, August 24, 2010—5:30 PM**

ASPE San Diego Board of Directors' Meeting

Location: Reno Contracting, Inc.
1450 Frazee Road, Suite 100

◆ **Tuesday, September 21, 2010**

ASPE San Diego General Membership Dinner Meeting

Program: Site Tour of UCSD Revelle College Housing

Speaker: Bob Wilson, Chief Estimator
Swinerton Builders

In-House Speaker: D. Keith Estes
Alcala, Inc.

Dinner Location: Embassy Suites Hotel
4550 La Jolla Village Dr, La Jolla

www.ccorpusa.com

JOHN WAYNE HEUSNER, CPE, LEED AP
Director
Cost Management

CUMMING

Program & Project Management
Cost Management & Estimating
Dispute Resolution & Avoidance
Planning & Scheduling

jheusner@ccorpusa.com

16744 West Bernardo Drive | San Diego, CA 92127
Phone 858.485.6765 | Fax 858.673.9263 | Cell 858.717.5709

[CLICK HERE](#) for ASPE National's 2009-10 Critical Calendar or go to:

http://www.aspenational.org/userfiles/file/09_10%20Critical%20CalendarA.pdf

GET INVOLVED IN YOUR SUPERIOR CHAPTER WITH DISTINCTION !!!



2009-2010 Chapter Officers

Office	Officer	Phone	Fax	Email
President	Ed Wenz, E Reno Contracting, Inc.	619.220.0224 x6242	619.220.0229	ewenz@renocon.com
1st Vice-President	Frank Young, FCPE O'Connor Construction Management, Inc.	858.467.9400	858.467.9405	pancho77@cox.net
2nd Vice-President	Dan Sackett, CPE Calif. Comfort Systems	858.564.1160	858.530.4074	dsackett@calcsusa.com
3rd Vice-President	Keith Estes, E Alcala, Inc.	619.291.1100	619.291.1142	kestes@alcala.com
Secretary	Stephen Fisher, CPE Fisher Consulting Group	760.639.8630		stephen.fisherFCG@cox.net
Treasurer	Laura Parker, CPE ROEL Consulting Services	619.906.2867	619.278.6604	laurap@roel.com
Executive Secretary	Rex Edmonds, CPE CP&M	760.591.9409	760.591.0733	rexedmonds@ltsp.com
Immediate Past President	Hennie Degenaar, CPE Gilbane Building Co.	858.717.3198	858.658.6701	hdegenaar@aol.com
Executive Administrator	Margy Ashby	619.749.1890 619.593.9988	619.593.9989	info@aspechapter4.org

2009-2010 Chapter Board of Directors

Director	Phone	Fax	Email
Todd Caha, CPE Baker Electric	760.745.2001	760.745.0292	tcaha@baker-electric.com
Lou Farallo, CPE Nautilus General Contractors, Inc.	619.564.5505	619.564.5516	farallo@nautilusgeneral.com
Liz Hawkins, E Swinerton Builders	858.815.2465	858.622.4044	ehawkins@swinerton.com
Larry Hendrick, CPE barnhart - Balfour Beatty	858.385.8200 x8139 760.310.9207	858.385.8201	lhendrick@barnhart-balfourbeatty.com
John W. Heusner, CPE Cumming	858.566.6217	858.673.9263	johnwheusner@san.rr.com
Dan Luckhardt, E O'Connor Construction Management, Inc.	619.980.4025	858.467.9400	dluckhardt@ocmi.com
Roger Mullins, CPE Raymond San Diego, Inc.	858.292.4499 x140	858.292.9144	roger.aspe@yahoo.com

TECHNICAL COMMITTEES:

Certification:

Lou Farallo, CPE

Education:

Hennie Degenaar, CPE

Ethics:

John W. Heusner, CPE

Standards:

Stephen Fisher, CPE

STANDING COMMITTEES:

Chapter Awards/ Nominations:

Hennie Degenaar, CPE

National Awards:

Dan Sackett, CPE

Bylaws:

Dan Luckhardt, E

Finance:

Laura Parker, CPE

Membership:

Larry Hendrick, CPE

Programs:

Frank Young, FCPE

OTHER COMMITTEES:

Calendar:

Liz Hawkins, E

Communications:

Newsletter:

Roger Mullins, CPE

Website:

Ed Wenz, E

Dinner Registrations:

Laura Parker, CPE

Election Tellers:

Larry Hendrick, CPE

Historian:

Dan Luckhardt, E

Mentoring:

Rex Edmonds, CPE

Parliamentarian:

Stephen Fisher, CPE

Public Relations:

Liz Hawkins, E

Scholarships:

Dan Luckhardt, CPE

Telephone:

Stephen Fisher, CPE

Ways & Means:

Todd Caha, CPE

Published by San Diego Chapter 4
 American Society of Professional Estimators



S.D. Mator

Reserve TODAY!

For the Tuesday, July 20, 2010
 ASPE Chapter 4 Dinner Meeting ...

ANNUAL AWARDS & INSTALLATION OF OFFICERS / DIRECTORS

CONTACT US

ASPE San Diego Chapter
 127 N. Westwind Drive
 El Cajon, CA 92020-2955

Phone: 619.749.1890
 Fax: 619.593.9989
 Email: info@aspechapter4.org
 Web: <http://www.aspechapter4.org>

THE ASPE SAN DIEGO CHAPTER GRATEFULLY
 ACKNOWLEDGES THE GENEROUS SUPPORT OF OUR

CORPORATE SPONSORS

and

MONTHLY ADVERTISERS

Baker Electric, Inc.
<http://www.baker-electric.com>

barnhart - Balfour Beatty
<http://www.barnhart-balfourbeatty.com>

**Bergelectric Corp.
 Contractors & Engineers**
<http://www.bergelectric.com>

**California Comfort
 Systems USA**
<http://www.comfortsystemsusa.com>

**CP&M (Construction
 Planning & Monitoring)**
<http://www.edmondsconsultants.com>

**Johnson, Finch & McClure
 Construction, Inc.**
<http://www.jfmcon.com>

Reno Contracting, Inc.
<http://www.renocon.com>

Trinity Grading, Inc.
<http://www.trinitygrading.com>

**Waller-Opsal
 Consulting**
<http://www.walleropsal.com>

ATI / AMERICAN TECHNOLOGIES, INC. [p. 8](#)

BAKER ELECTRIC, INC. [p. 3](#)

BERGELECTRIC CORP. [p. 7](#)

CASPER COMPANY [p. 3](#)

CONSTRUCTION ANALYSTS, INC. [p. 6](#)

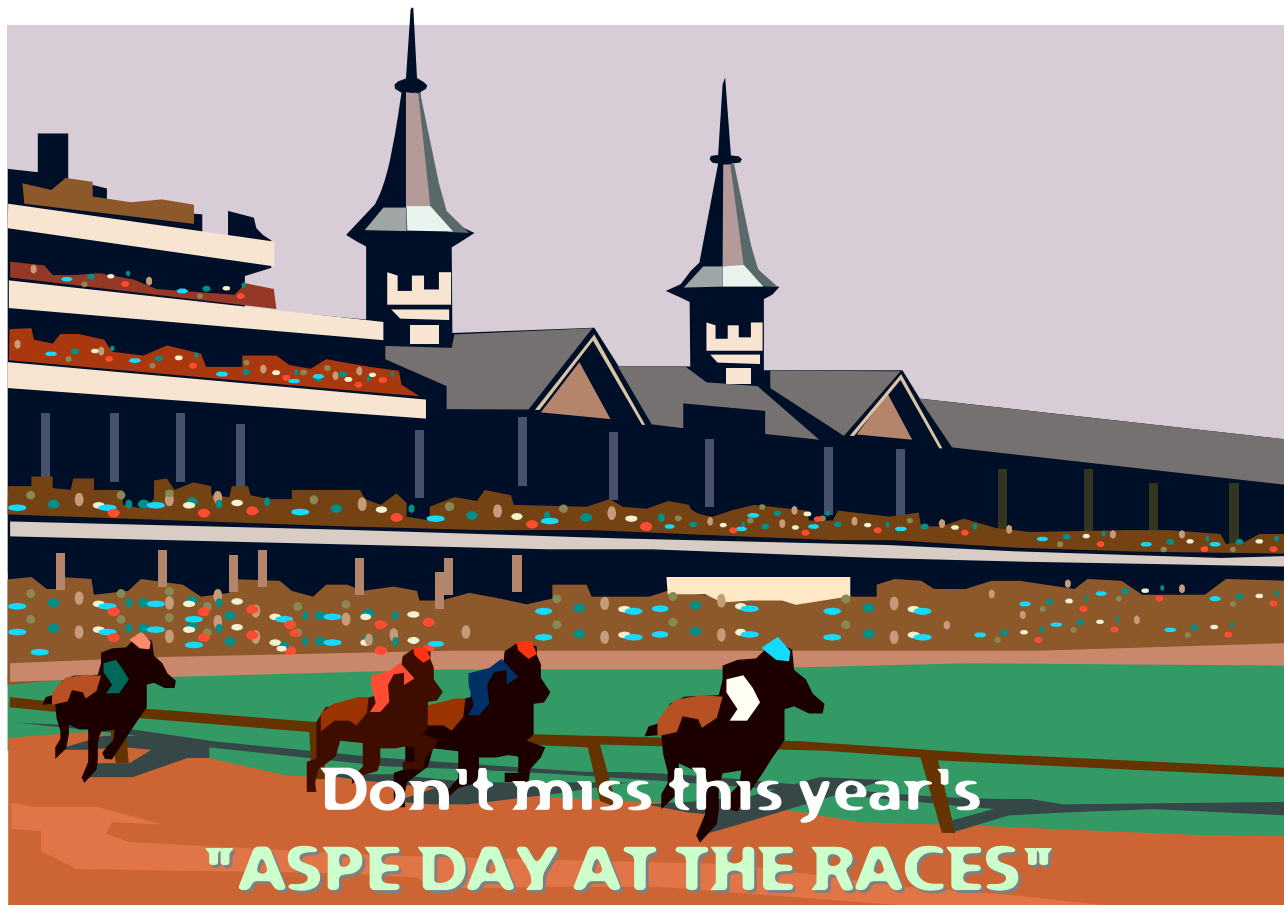
CUMMING [p. 12](#)

FBC BUILDING SOLUTIONS [p. 5](#)

MADSEN, KNEPPERS & ASSOCIATES, INC.... [p. 6](#)

TRINITY GRADING, INC. [p. 3](#)

U.S. CONCRETE PRECAST GROUP [p. 7](#)



Saturday, August 14, 2010

This is typically the most popular event of the San Diego Chapter #4 calendar.

Saturday, August 14th is our big day this year at the Del Mar Thoroughbred Club's Clubhouse Terrace Restaurant. Show-up time is 1:00 to 1:30 PM. First Post Time is 2:00 PM. Enter the RED Gate.

As always, we will have *choice seating in the shade*, but only a limited number of tickets is available ... so don't delay! **Tickets are \$30 per person** or \$120 per table. Seating is 4 per table for a total of 52 seats. Groups of more than 1 table must maintain foursomes, not twosomes. There will be no discounts for multiple table orders. Single attendees will be seated where directed by the ASPE member-in-charge, Rex Edmonds, CPE, to assure that all couples and foursomes are accommodated, and all tables are filled.

Place your order with Rex Edmonds, CPE, by sending your check **FOR THE FULL AMOUNT** of your reservation, **made payable to "Rex Edmonds CPE,"** to Rex at 1561 Via Entrada del Lago, San Marcos, CA 92078, or contact Rex at rexedmonds@lts.com with any questions.