

San Vicente Dam Raise Project Update

DATE: Tuesday, April 19, 2011
TIME: **5:30 PM**—Social Hour and
Check-in of Attendees
6:30 PM—Buffet Dinner Service
begins
Program to follow

PROGRAM:
**SAN VICENTE DAM RAISE
PROJECT UPDATE**

PRESENTER:
Kelly Rodgers
Senior Engineer
SAN DIEGO COUNTY WATER AUTHORITY

IN-HOUSE TALK:
Tim Dyer
Cost Estimating Supervisor
SAN DIEGO COUNTY WATER AUTHORITY

Topic: "What Does It Take to Raise a Dam?"
[\(See in-house article beginning on page 5.\)](#)

LOCATION:
The Butcher Shop Steakhouse
5255 Kearny Villa Road, San Diego

COST: \$35⁰⁰ per person
*Cancellations must be received by NOON on Monday,
April 18th or no shows will be billed accordingly.*

[Click here for Dinner Mtg Reservation Policy](#)

RSVP: Steve Fisher at 760.639.8630
or stephen.fisherFCG@cox.net

Meeting at a Glance



April Program Notes: San Vicente Dam Raise Project Update

It is hard to believe that more than four years have elapsed since ASPE San Diego Chapter #4 listened to a dinner meeting presentation by GEI Consultants from Carlsbad, CA, about the upcoming San Vicente Dam Raise. The original 220 foot high concrete gravity dam was built in the early 1940's at a cost of \$2.7 million. However, the reservoir had to await the completion of the First Aqueduct in 1947 before receiving its water. If you recall, this project is part of the San Diego County Water Authority's \$1 billion Emergency Storage Project. Key elements of the ESP include reservoir storage and expansion of transmission and distribution capabilities. This investment will provide a six-month supply of water in case of emergency (droughts) or natural disasters (earthquakes).

[\(continued on pg 3\)](#)

INSIDE THIS ISSUE ...

April Program Notes	1,3-4
From Our President	2
San Vicente Dam Raise (<i>in-house article by Tim Dyer</i>)	5,7
March Meeting Photos	6
Meet a Member of Your Chapter Board: Stephen Fisher	8
California Comfort Systems USA, Inc., a proud Corporate Sponsor of ASPE Chapter 4	9
Online Construction Classes for Spring Term	10-11
Paving Daytona Speedway.....	12
Become an ASPE Newsletter Sponsor or Advertiser	13
ASPE Membership	13
ASPE Mission Statement	13
San Diego Chapter Calendar of Events.....	14
2010-2011 Officers, Board of Directors, Committees	15
Corporate Sponsors & Monthly Advertisers.....	16

Greetings, fellow ASPE Chapter 4 members!

This month I'd like to bring to everyone's attention our monthly newsletter's Corporate Sponsors and Advertisers. Most of our sponsors have been longstanding and over the years have been instrumental in many of our special fundraising activities and educational programs. Sponsorships for our newsletter help to keep costs and fees as low as possible for our members. Sponsorship also reflects their support of the principles for professional estimators, including Education, Standards, Certification, Fellowship, Professionalism as well as the nine Canons of the ASPE Code of Ethics.



Ed Wenz, E

Our current ASPE Chapter 4 Newsletter Sponsors are:

- Baker Electric, Inc.
- Barnhart Balfour Beatty
- Bergelectric Corp.
- California Comfort Systems USA
- CP&M - Construction Planning & Monitoring
- Johnson, Finch & McClure Construction, Inc.
- Reno Contracting Inc.
- Trinity Grading, Inc.
- Waller-Opsal Consulting

Many of our monthly ASPE Chapter 4 Newsletter advertisers have also been with us for a number of years and have successfully advertised their businesses and services.

Our current advertisers are:

- ATI/American Technologies, Inc.
- Baker Electric, Inc.
- Bergelectric Corp.
- Cumming
- FBC Building Solutions
- Madsen, Kneppers & Associates
- Trinity Grading, Inc.
- U.S. Concrete Precast Group

All of our sponsors and advertisers are listed on [page 16](#) of this newsletter, along with links to their websites; they are also included on our website's Resource page at <http://www.aspechapter4.org/resources.html>. For more information and costs on sponsorships and advertising, see details on [page 13](#).

Please be sure to sign up early for our upcoming dinner program of the "San Vicente Dam Raise Project Update." Speakers Kelly Rodgers, Senior Engineer / Project Manager, and In-House Speaker / Chapter 4 member Tim Dyer of the San Diego County Water Authority will provide insights on the challenges of the project from estimating through construction and what it means to San Diego residents. See this month's program article [beginning on page 1](#).

Ed Wenz, E
Reno Contracting, Inc.
President
ASPE San Diego Chapter 4

Todd Caha, CPE
Senior Estimating Manager



Baker Electric, inc.

4 Generations since 1938

1298 Pacific Oaks Place • Escondido, CA • 92029
858.566.1980 • 760.745.2001 • Fax 760.745.0292
Direct 760.690.5142
tcaha@baker-electric.com

The dam will be increased in height by 117 feet, boosting its watershed capacity by 152,000 acre-feet. Montgomery Watson Harza (MWH) has the design contract and will furnish other engineering services during construction. Black & Veatch and Parsons are acting as Construction Managers on the \$570 million job. Ground was broken in July 2009 with a celebratory blast at the base of the dam. Current schedule milestones include:

Foundation preparatory work	Summer 2009 – Summer 2010
Dam raise	Summer 2010 – Early 2013
Replacement pipeline	Summer 2012 – Summer 2013
New marina construction	Summer 2013 – Summer 2014
Site restoration	Summer 2013 – Summer 2014



The new RCC (Roller Compacted Concrete) structure will be the tallest dam in San Diego County, the tallest dam raise in the United States, and the tallest of its type in the world. Contrary to Governor Jerry Brown's proclamation that California's drought is over, officials in San Diego County are not that optimistic. Trends for lower water usage in San Diego are encouraging, but conservation efforts should continue. Reservoirs used by the City of San Diego are reported to be approximately 63% full as compared to 50% capacity last year. In May 2006, at the U.S. Society on Dams annual conference in San Antonio, TX, Tom Keller from GEI Consultants was one of the featured speakers to present a paper on "The Role of Dams in the 21st Century" which detailed the scope of the San Vicente Dam Raise. We have included some of the sketches from that particular seminar.

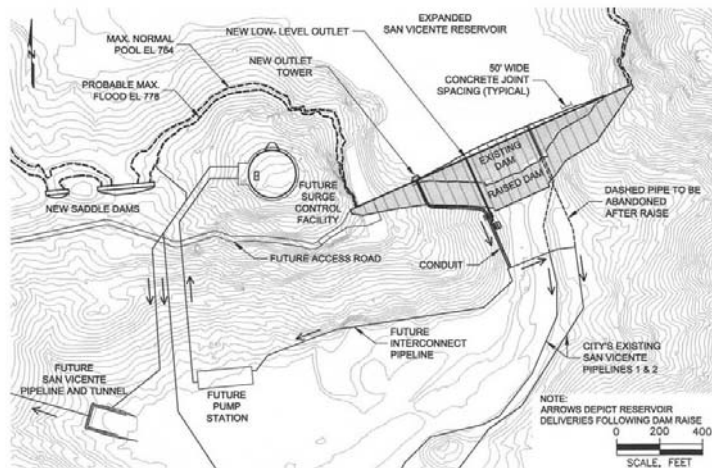


Figure 5. Site Plan for Raised San Vicente Dam



We welcome Kelly Rodgers, Senior Engineer at the San Diego County Water Authority, who is tasked with the responsibility as Project Manager for the San Vicente Dam Raise. Since joining the agency in 2006, she has worked on two hydroelectric projects, and has over 20 years

of engineering experience in both the public and private sectors.

Kelly earned her Bachelor's degree in Civil Engineering from Penn State, her MBA from Ashford University, and is currently working on a Ph.D. in Public Policy and Administration. She is a registered

Civil Engineer in the State of California, holds a certification as a Project Management Professional, and is a member of ASCE. As principal speaker for this month's dinner meeting, her presentation will include the following topics:

- Purpose and Need for Project
- Design Criteria
- Construction Update
- Challenges and Opportunities
- Questions from the Audience

[\(continued on pg 4\)](#)

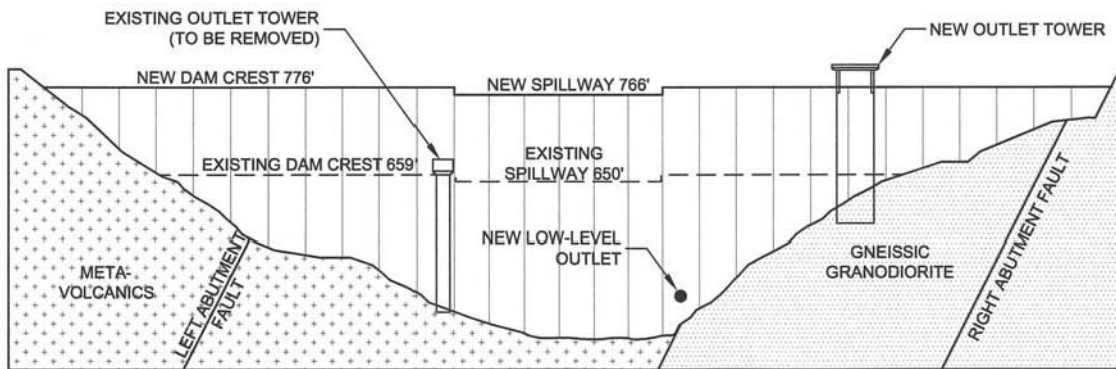


Figure 4. Raised San Vicente Dam Elevation with Geologic Conditions

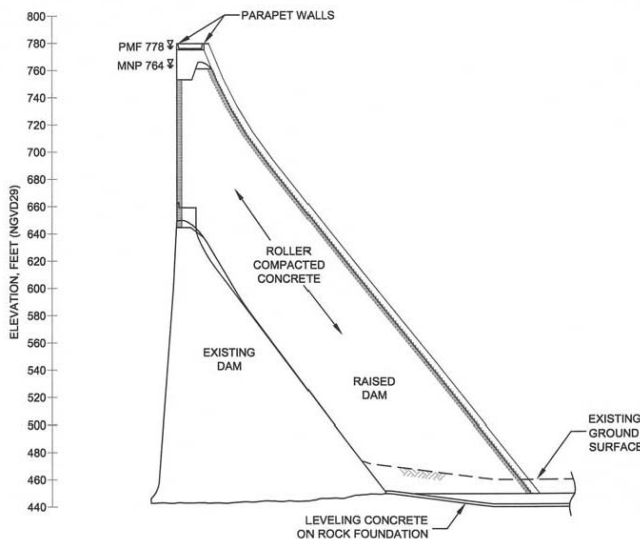


Figure 3. San Vicente Dam Raise Cross Section

In addition, we will enjoy the in-house talk from Tim Dyer, Cost Estimating Supervisor for the San Diego County Water Authority, on “What Does It Take to Raise a Dam?” He will provide additional facts and figures about estimating the cost for this remarkable structure and its surrounding appurtenances. Dan Luckhardt, CPE, Senior Estimator for O’Connor Construction Management, Inc., has just finished an estimate on the Bypass Pipeline alternatives for GEI Consultants.

We will convene on Tuesday, April 19th at the Butcher Shop Steakhouse Restaurant (5255 Kearny Villa Road, San Diego) with Registration and Social Hour starting at 5:30 P.M., buffet dinner will be served at 6:30 P.M. offering a similar selection of delicacies as seen in January 2011, with an exciting program to follow. Cost will be the normal \$35.00 per person, and should attract a large gathering of members and guests. Don’t miss this opportunity to learn more about one of the epic and most significant projects in San Diego’s history.

For this month only, please contact Steve Fisher, CPE, to make your reservations:

Telephone – 760.639.8630
 Email – stephen.fisherFCG@cox.net

Frank E. Young, FCPE
 1st Vice President and Program Chair
 ASPE San Diego Chapter 4



Bergelectric
Careers

Bergelectric, one of the nations largest and most experienced electrical contractors, is currently seeking experienced estimators in their San Diego Office. Available positions include...

- Excellent Salaries
- Paid Time Off Package
- Company Funded Pension Plan
- 401K Plan
- No Cost Employee Medical & Dental
- No Cost Long Term Disability & Life
- Relocation Assistance
- Bonuses * *Bonuses are not guaranteed, however have been distributed 16 out of the last 17 years.



650 Oppen Street • Escondido, CA 92029 • www.bergelectric.com • EOE M/F/D/V
 Contact: Jason Hefley or Mike Hughes at (760) 746-1003 • jhefley@bergelectric.com



SAN VICENTE DAM RAISE

by Tim Dyer, Cost Estimating Supervisor
San Diego County Water Authority

What does it take to raise a dam? This is something that is not a common event and was the task the San Diego County Water Authority faced with the San Vicente Dam Raise. The existing dam is to be raised an additional 117 feet above its original height of 220 feet. This will increase the existing storage capacity by 152,000 acre-feet of water from 90,000 acre-feet to 242,000 acre-feet.

The project is broken into six bid packages:

- Package 1 - San Vicente Dam Raise Project – Test Quarry and Test Crushing
- Package 2 - San Vicente Dam Raise Project – Foundation Excavation
- Package 3 - San Vicente Dam Raise Project – Roller-Compacted Concrete Dams and Appurtenant Facilities
- Package 4 - San Vicente Bypass Pipeline Replacement
- Package 5 - San Vicente Marina Facilities
- Package 6 - San Vicente Habitat Restoration at San Vicente Site

Early on, it was decided that there would be an “Estimating Focus Group” for Packages 2 and 3. The group met on a quarterly basis to develop the Work Breakdown Structure for the construction estimates and to resolve schedule-related issues. The Water Authority decided on a strategy to develop three estimates independently of each other. The material take-off would be supplied by the designer from the CADD drawings as the design developed along with some material quotes. The goal was to produce a comprehensive estimate range for each of the two bid packages that would minimize any major surprises at bid time and allow for constructability issues to be worked through before the documents were released for bid. Estimates were developed by:

- The Designer, MWH and sub-consultant URS
- The Construction Manager, Parsons/Black & Veatch Joint Venture
- The Water Authority

The estimates were developed at the 10%, 30%, 60%, 90% design stage and bid ready. Means and methods were independent as long as they met the requirements of the specifications.

The focus for this article is on Package 3, the estimate for the Roller-Compacted Concrete Dams and Appurtenant Structures. The final estimate consisted of 68 bid items and 5 allowance items. Twenty-three items were Lump Sum and forty-five were based upon a Schedule of Quantities.

The Package 3 major work elements were as follows:

- Construction Access
- Construct San Vicente Dam Raise and Saddle Dam
- Outlet Works
- Downstream Control Facility
- Construct Low Level Outlet Works
- Marina Grading and Improvements

Construct San Vicente Dam Raise and Saddle Dam major work elements included the following items:

- Drill and grout the previously excavated foundation; drill and grout through the existing dam; coring foundation to check the effectiveness of the grouting program
- Excavate Marina of 1,250,000 cy of material
- Produce and stockpile 1,250,000 Tons of Roller Compact Concrete (RCC) aggregates
- Place and compact 825,000 cy of Marina Fill
- Place 500 cy of dental concrete
- Mix, convey, place and compact 620,000 cy of RCC

[*\(continued on pg 7\)*](#)

MARCH MEETING PHOTOS



George Welch, Academic Program Coordinator and faculty member starts his presentation for the NewSchool of Architecture and Design



Dr. Linda Thomas-Mobley, J.D., Ph.D., discusses the vision for the NewSchool of Architecture and Design located in downtown San Diego



With acting President Dan Sackett, CPE looking on, Dan Luckhardt, CPE introduces our March guest speakers from the NewSchool of Architecture and Design



Kevin Murphy, CPE receives his CPE certificate and pin from Education Chair Lou Farallo, CPE at the March 2011 Chapter dinner meeting

**MEETING PHOTOS PROVIDED COURTESY OF
KEITH ESTES, CPE
ESTES CONSTRUCTION MANAGEMENT CO. (ECMC)**

Based upon the initial mix design, the production of 620,000 cy of RCC required 57,000 tons of cement, 70,000 tons of Pozzolan (Fly-ash) and 288,000 gallons of retarding admixture.

The Major challenge was selecting the equipment and establishing production rates. In particular for three items:

1. Drilling and grouting on steep slopes.
2. Drilling and grouting inside of the dam with the space restrictions and confined space regulations.
3. We needed to establish a rental rate for the RCC Batch Plant. The plant selected for the Water Authority estimate had a capacity of 600cy/hour and a new purchase value of \$2,000,000. The economic life for this plant is 8,000 hours and the estimated use of the plant was 2,650 hours.

From the test quarry and crushing contract, it was established that the conglomerate to be used onsite had a waste factor of around 65%. In order to deal with amount of 1-inch minus material, the Water Authority decided to put the mined material over two vibrating grizzlies before it entered the primary Jaw Crusher. This was to get rid of as much finer material early and allow us to use a smaller Jaw Crusher. From the Jaw Crusher, the material went over a scalping screen to remove the 1-inch minus material; then the aggregate was placed in a stockpile. From the first stockpile, the material then went through a Horizontal Impact Crusher to a new stockpile. From this stockpile, the aggregate then passed through a Vertical Impact Crusher then across a series of screens to be sorted into four different sized aggregate stockpiles. The Water Authority team elected to use the two intermediate stockpiles, which allows the individual crushers or screens to be taken out of service for maintenance while the crushing operation continues.

RCC placing was planned in two ten-hour shifts that would start in the late afternoon continuing to midday. Placement was estimated at seven hours of the ten-hour shift with an average placement rate of 350cy/hr, well within the capacity of the batch plant.

Bids for Package 3 received were:

1. Shimmick-Obayashi Joint Venture	\$140,206,050
2. Ames-Granite Joint Venture	\$143,139,645
3. Kiewit Pacific Co.	\$157,865,050
4. Barnard – ASI Joint Venture	\$187,725,000
5. Dragados – C.C. Myers Joint Venture	\$192,371,900
Water Authority In-House Estimate	\$184,850,087

When evaluating the bid results compared to the in-house estimate to the total bid values, it is always interesting to see how well the sub-bid estimates compare to the subcontract values received. This allows us to hone into areas of differences. This estimate will eventually be made into a library estimate for future planning use.

From a materials basis, we did see a substantial drop in the prices for cement and fly-ash than the numbers we received. These two items alone represented over \$8.8 million of direct cost.

The in-house estimates were produced by Amelito Gozum and yours truly, with Vanir Construction Management supplying the electrical and instrumentation subcontract estimate. In the early stages we brought in Jeff Allen, Principal of E & C Services out of Colorado, to review our progress and help refine crews and the grouting program and RCC placement. From a personal perspective, I found this to be a very rewarding project to estimate. ■




Todd Ebbert
General Manager
Southern California
tebbert@us-concrete.com

2735 Cactus Road
San Diego, CA 92154
Direct: (619) 240-8002
Tel: (619) 240-8000
Cell: (619) 843-3849
Fax: (619) 661-1038
www.sdpc.com

US CONCRETE PRECAST GROUP
Build with US™

PROVIDING INNOVATIVE SOLUTIONS, QUALITY, AND SERVICE

6155 CORNERSTONE COURT, SUITE 110
SAN DIEGO, CA 92121



Madsen, Kneppers & Associates, Inc.
Construction Consultants & Engineers

DONALD W. ELDER, CPE

TEL 858.597.0383
CELL 858.722.2787
FAX 858.597.0387
DELDER@MKAINC.COM

800.822.6624 :: WWW.MKAINC.COM

Meet a Member of Your Chapter Board ...

Focus on STEPHEN FISHER, CPE

President, Fisher Consulting Group



Steve Fisher, CPE

Steve Fisher is President of Fisher Consulting Group.

Born and raised in San Diego, CA, Steve graduated from Point Loma High School, and entered the construction industry at the age of 23 while living on the island of Kauai, HI, working for several General Contractors designing and building custom homes. He eventually joined the carpenters union, constructing many of the hotels and condominium complexes located in the Poipu Beach area. In 1984 Steve took the Project Engineer position at Poipu Kai Resort, responsible for the supervision of on- and off-site reconstruction and repair of four condominium complexes and two residential sub-divisions.

In 1986, Steve relocated to San Diego, working as a carpenter while attending San Diego State University's extended studies program on Construction Management. In 1988 he began with R.E. Hazard Jr., Inc. as a Contract Manager and Estimator. Steve's responsibilities

included pre-construction quantity survey and assistance in bidding of projects. During the construction phase, his responsibilities included acting as the company liaison among the owner, design professionals, and subcontractors, submittals, oversight of project personnel, monitoring of construction, value engineering and cost analysis, and project close-out.

In 1991, while living in San Clemente, Steve began working for a home remodeling company in Irvine, CA. As the Construction Manager, his responsibilities included acting as liaison among the owner, the design team, and subcontractors. He was also responsible for pre-construction constructability review, and scheduling review, subcontractor negotiations, site meetings, monitoring of construction, progress payment and, punch-list through project close-out.

In 1993, Steve joined the estimating department at Melhorn Construction Company in San Diego, focusing on forensic estimating. His responsibilities included project set-up, forensic investigation, document analysis, quantity survey and cost estimating, delay analysis, contract disputes, and materials research.

In 1995, Steve joined McCormick Construction Company, San Diego Division, as a forensic estimator. His responsibilities included project set-up, forensic investigation, quantity survey and cost estimating, constructability review. In 1997 Steve was promoted to Manager of the Estimating Department, San Diego Division, which furthered his responsibilities to include material research, subcontractor allocations, document research and analysis, peer review, delay analysis, contract disputes, participation in expert meetings, mandatory settlement conferences (MSC), depositions and trial testimony.

In 2006, Steve joined the team at MC Consultants Inc. where his responsibilities included forensic investigation, document analysis, development of repair recommendations, quantity survey and cost estimating, delay analysis, contract disputes, mold investigation, building code and materials research.

In 2009, Fisher Consulting Group opened its doors offering forensic investigation and estimating services for construction defect litigation.

Steve enjoys spending time with his family—cycling along the beach, kayaking, surfing, swimming, and playing with the dogs. He also enjoys music, playing drums and live concerts. They enjoy family vacations to the Grand Tetons (great kayaking, hiking and cycling), Yellowstone and the Hawaiian Islands.

Steve currently serves as Third Vice President and Standards Chair for the ASPE San Diego Chapter 4. Thanks, Steve, for your continued participation and service to ASPE.

Ed Wenz, E
Reno Contracting, Inc.
President
ASPE San Diego Chapter 4

JOHN WAYNE HEUSNER CPE, LEED AP, EDAC
Director
Cost Management

CUMMING
Program & Project Management
Cost Management & Estimating
Dispute Resolution & Avoidance
Planning & Scheduling

Phone 858.217.3579 | jheusner@ccorpusa.com

www.ccorpusa.com

We are a *full service mechanical contractor* with the strength of corporate backing and the personal touch of local leadership. Comfort Systems USA is traded on the NYSE under the symbol FIX.

The following describes the services we provide:

Preconstruction services:

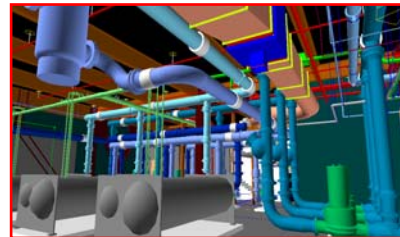
- Conceptual design and budget estimating
- 3-D / BIM detailing of mechanical systems
- Value analysis of systems
- Life cycle cost analysis
- Design and engineering for design/build projects overseen by an on-staff professional engineer



California Comfort Systems' **AutoCAD detailing** department *offers both 2-D and 3-D* detailing and coordination. We have extensive experience in leading the coordination effort, if required. We have established coordination processes and CAD standards that can be universally applied.

Our coordination process includes:

- Weekly coordination meetings
- FTP set up and guidelines
- Clash detection
- Drawing naming convention
- Spool maps
- Sheet metal fabrication drawings
- Hydronic and plumbing piping fabrication drawings



We provide **full service HVAC, plumbing, and process piping installations.**

Our strengths include:

- A focus on safety
- A consistent central estimating department
- Design/build experience across multiple market segments
- Unlimited bonding capacity
- A merit shop culture with a highly skilled workforce
- National purchasing agreements
- Full service maintenance, service and repair division.



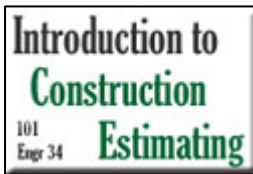
Project specific experience is available.

Online Construction Classes for Spring Term

The following article contains information about online construction courses offered at San Diego State University and selected non-profit construction industry organizations. **Classes start April 11, 2011**. Registrations are currently being accepted by all providers.

Registration options for **Spring Term 2011** classes include:

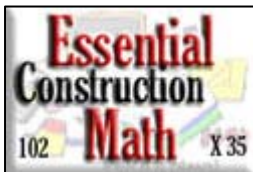
- * 101 Introduction to Construction Estimating
- * 102 Essential Construction Math
- * 103 Construction Blueprint Reading
- * 106 Estimating and Bidding 2
- * 107 Construction Materials and Practices
- * 301 Fundamentals of Green Building Design and Construction
- * 304 Green Building Commissioning
- * 201S Leadership and Motivation
- * 203P Problem Solving and Decision Making
- * 206T Cost Awareness and Production Control



101 INTRODUCTION TO CONSTRUCTION ESTIMATING (online)

Learn the basic principles of construction estimating. Topics to be studied include: organization of the estimate, types of estimates, elements of an estimate, quantity take off techniques, pricing techniques, adjusting the estimate for a variety of variable factors, estimating labor, materials and equipment, and profit and overhead markups. Students will learn about the different types of estimates and how to organize an estimating document. This course will build a foundation of knowledge that the student will use while

estimating virtually any individual trade or project type. http://www.constructionclasses.com/estcert/101_itce.htm



102 ESSENTIAL CONSTRUCTION MATH

This class is intended to develop mathematical skills that can be applied to the construction trades through practice and application. This course is an introduction to other courses in construction. While this class is not a prerequisite for any other classes, it does provide a foundation for them. http://www.constructionclasses.com/estcert/102_math.htm



103 CONSTRUCTION BLUEPRINT READING (online)

Learn how to read architectural, structural, civil, mechanical and electrical blueprints. Students will practice looking up information and solving common construction problems by reading the blueprints. This course is designed to provide foundational knowledge and practice at reading blueprints.

http://www.constructionclasses.com/blueprint/blueprint_syllabus.htm

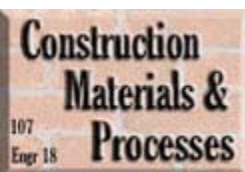


106 ESTIMATING AND BIDDING 2 (online)

This course features hands-on estimating and quantity take off activities associated with Metals, Wood, Doors and Windows, Finishes, Electrical, and Mechanical Estimating. By the end of this class you should be able to estimate the conceptual cost of structural metals, prepare quantity take off and estimate of rough carpentry, prepare a quantity take off of roofing and waterproofing, use unit prices to price doors and windows, prepare quantity

take off and estimate various finishes, prepare a quantity take off and conceptual estimate of mechanical systems, and prepare a quantity take off and conceptual estimate of electrical systems.

<http://www.constructionclasses.com/estcert/eb2.htm>



107 CONSTRUCTION MATERIALS AND PRACTICES

Learn about quality control procedures for various materials, material manufacturing processes and the physical limitations of the materials being studied. The regulatory environment under which materials are manufactured and incorporated into new structures will be studied. http://www.constructionclasses.com/estcert/107_mats.htm

(cont'd on pg 11)

Online Construction Classes for Spring Term

301 FUNDAMENTALS OF GREEN BUILDING DESIGN AND CONSTRUCTION

[\(continued from page 10\)](#)

This course provides an overview of design and construction delivery systems for high performance green buildings. The US Green Building Council (USGBC) Leadership in Energy and Environmental Design (LEED) will be studied in some detail. Sustainability evaluation systems will be reviewed. This course focuses on LEED-NC (new construction) requirements. http://www.constructionclasses.com/300/301_green.htm



304 GREEN BUILDING COMMISSIONING

This course will cover the various aspects and requirements of building commissioning through the pre-design phase, design, construction and post-construction phases of a building construction project. We will study the make-up of the Commissioning Team and the role of scheduling and coordination in the commissioning process. Some of the topics we will study includes verification and testing, documentation, training, systems and ongoing commissioning.

http://www.constructionclasses.com/300/304_commissioning.htm

Construction Supervision Classes



201S LEADERSHIP AND MOTIVATION (online)

Learn how to recognize your style of leadership and how to utilize other styles when appropriate. The affect that attitudes and abilities have on job performance and how to positively influence attitudes and abilities will be studied. The leader as goal setter, communicator and role model will all be discussed. Job site applications of all subjects will be stressed. <http://www.constructionclasses.com/css/descriptions/201S.htm>



203P PROBLEM SOLVING AND DECISION MAKING FOR CONSTRUCTION SUPERVISORS (online)

Learn how to identify, prevent, and solve construction problems. Subjects include identifying the source of problems, barriers to problem solving and symptoms that often mask the real problem. Human performance problems, scheduling problems and technical problems will be covered. The 6-step method of problem solving and decision making will be stressed.

<http://www.constructionclasses.com/css/descriptions/203P.htm>



206T COST AWARENESS AND PRODUCTION CONTROL (online)

Learn the skills necessary for effective control of construction costs at the job site. Apply principles and practices associated with cost awareness and production control to each element of your project. Control of labor and equipment costs.

<http://www.constructionclasses.com/css/descriptions/206T.htm>

To learn more about online CERTIFICATE PROGRAMS, go to:

http://www.constructionclasses.com/certificate_programs.htm

QUESTIONS?

Send an email to Bob George at

bob@ConstructionClasses.com

or visit the Frequently Asked Questions page at

http://www.constructionclasses.com/faq_potential.htm.

A logo for Trinity Grading, Inc. featuring a large, stylized orange letter 'T' with a rough, hand-drawn border. The background of the 'T' is filled with a pattern of small, dark, irregular shapes. Below the 'T' is the text "TRINITY GRADING, INC." in a bold, sans-serif font, with "Lic. # 847643" in a smaller font underneath.

Tim Lackey
President

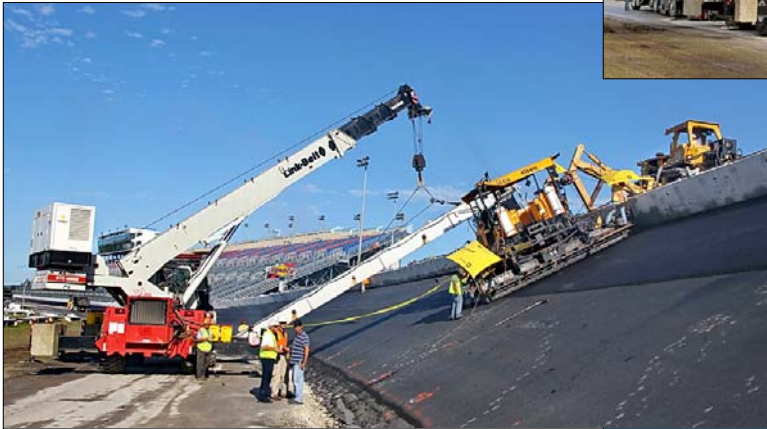
P.O. Box 1122
Fallbrook, CA 92088

Phone: (760) 728-2981
Fax: (760) 728-5781
Cell: (619) 520-5576

tlackey@trinitygrading.com
www.trinitygrading.com

PAVING DAYTONA SPEEDWAY

Not only is this a true engineering project feat,
but will give you better perspective of the pitch of the track itself.





\$350 CORPORATE SPONSORSHIP, includes:

- Sponsor Recognition in each of the 12 Monthly Newsletters
- Includes a Hot Link to Either Your Website or Email
- A Full-Page Sponsor Profile in 1 Issue

MONTHLY ADVERTISEMENT:

12 Mo. Issues – 1/4-Page Ad for **\$450**
OR

12 Mo. Issues – Business Card for **\$200**

EMPLOYMENT AD:

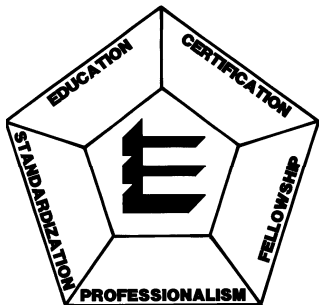
\$50 per month (FREE to ASPE Members)

FOR MORE INFORMATION:

Contact **LAURA PARKER, CPE**

619.906.2867

OR laurap@roel.com



ASPE MISSION STATEMENT

The American Society of Professional Estimators serves construction estimators by providing education, fellowship and the opportunity for professional development.

ASPE Membership

An accurate cost estimate is the first of many key components of a successful construction project. Plan interpretation, labor and material costs, scheduling costs, and level of difficulty recognition are a fraction of the skills necessary to become a successful estimator.

Why join the American Society of Professional Estimators? ASPE is the most recognized and credentialed group of construction cost professionals in our nation's construction industry. ASPE provides education, industry information, and fellowship to all levels of our members. It is made up of professionals of several different classifications.

- A- **Estimator**—shall have at least five years' experience as an estimator in one or more of the construction estimating disciplines.
- B- **Constructor**—shall be an active construction professional experienced in one or more of the construction disciplines with at least 5 years' experience.
- C- **Associate Member**—is a Member with less than 5 years of experience as an estimator or an active construction professional. When the Member achieves 5 years of experience, the Member shall be given one of the Member classifications listed above.

One of the ultimate goals of a member in ASPE is to achieve status as a "Certified Professional Estimator," otherwise know as "CPE." CPE status is recognized by Builders, Government Agencies, Developers, and many other Corporate entities as the highest level of qualification as an estimator. Educational training is available to become part of this elite group of professionals.

ASPE San Diego Chapter 4 is perennially recognized as one of the top chapters of the nation's 50 chapters. The local chapter meets on the third Tuesday of each month. This general membership meeting offers education and insight into our industry. Each membership meeting is highlighted by presentations and guest speakers, with information pertinent to our ever-changing industry.

If you would like to become part of this exciting group of professionals, please contact Hennie Degenaar, CPE at hdegenaar@aol.com or 858.717.3198. ■



ASPE San Diego Chapter 4 CALENDAR OF EVENTS

◆ **Tuesday, April 19, 2011**

ASPE San Diego General Membership Dinner Meeting

Program: San Vicente Dam Raise Project Update

Speaker: Kelly Rodgers, Senior Engineer
San Diego County Water Authority

In-House Talk: Tim Dyer, Cost Estimating Supervisor
San Diego County Water Authority

Dinner: The Butcher Shop Steakhouse

Location: 5255 Kearny Villa Road
San Diego

◆ **Tuesday, April 26, 2011—5:30 PM**

ASPE San Diego Board of Directors' Meeting

Location: Reno Contracting Inc.
1450 Frazee Road, Suite 100
San Diego

◆ **Tuesday, May 17, 2011**

ASPE San Diego General Membership Dinner Meeting

Program: Ethics Program

Moderator: Dan Luckhardt, CPE

In-House Talk: John Wayne Heusner, CPE

Location: The Butcher Shop Steakhouse
5255 Kearny Villa Road
San Diego

◆ **Friday, May 20, 2011**

ASPE San Diego Education Seminar

Program: 2 tracks with 3 speakers in each track

Speaker: John Wayne Heusner, CPE
Education Committee Chair
Flyer will be available by April 19th

Location: National University
3580 Aero Court
San Diego

◆ **Tuesday, May 24, 2011—5:30 PM**

ASPE San Diego Board of Directors' Meeting

Location: Reno Contracting Inc.
1450 Frazee Road, Suite 100
San Diego

◆ **Tuesday, June 21, 2011**

ASPE San Diego General Membership Dinner Meeting

Program: Site Tour to Highland Corporate Center
(tentative)

Host: Roel Construction Co.
(now Suffolk Construction)

In-House Talk: Laura Parker, CPE

Location: Embassy Suites Hotel
7777 La Jolla Village Drive
La Jolla

◆ **Tuesday, June 28, 2011—5:30 PM**

ASPE San Diego Board of Directors' Meeting

Location: Reno Contracting Inc.
1450 Frazee Road, Suite 100
San Diego

◆ **Wednesday, July 13 to Thursday, July 14, 2011**

ASPE National Estimating Academy

Program: See National website for
information and registration

Location: Hutton Hotel
Nashville, Tennessee

◆ **Wednesday, July 13 to Saturday, July 16, 2011**

ASPE National Convention

Program: See National website for
information and registration

Location: Hutton Hotel
Nashville, Tennessee

◆ **Tuesday, July 19, 2011**

ASPE San Diego General Membership Dinner Meeting

Program: Awards & Installation of Officers & Directors

Speaker: To be determined

Location: The Butcher Shop Steakhouse
5255 Kearny Villa Road
San Diego

◆ **Tuesday, July 26, 2011—5:30 PM**

ASPE San Diego Board of Directors' Meeting

Location: Reno Contracting Inc.
1450 Frazee Road, Suite 100
San Diego

[CLICK HERE](#) for ASPE National's 2010-11 Critical Calendar or go to:

<http://www.aspenational.org//Upload/FilesMenu/10.11%20Critical%20Calendar.pdf>



2010-2011 Chapter Officers

TECHNICAL COMMITTEES:

Certification:

Lou Farallo, CPE

Education:

John W. Heusner, CPE

Ethics:

Dan Luckhardt, CPE

Standards:

Stephen Fisher, CPE

STANDING COMMITTEES:

Chapter Awards/ Nominations:

Ed Wenz, E

National Awards:

Dan Sackett, CPE

Bylaws:

Keith Estes, CPE

Finance:

Laura Parker, CPE

Membership:

Hennie Degenaar, CPE

Programs:

Frank Young, FCPE

OTHER COMMITTEES:

Calendar:

Dan Sackett, CPE

Communications:

Newsletter:

Kevin Murphy, CPE

Website:

Ed Wenz, E

Historian:

VACANT

Mentoring:

John W. Heusner, CPE

Parliamentarian:

Keith Estes, CPE

Public Relations:

Dan Sackett, CPE

Scholarships:

Dan Luckhardt, CPE

Telephone:

Michael Moyers, CPE

Ways & Means:

Laura Parker, CPE

Office	Officer	Phone	Fax	Email
President	Ed Wenz, E Reno Contracting, Inc.	619.220.0224 x6242	619.220.0229	ewenz@renocon.com
1st Vice-President	Frank Young, FCPE CSOS	619.980.4025	619.401.7545	pancho77@cox.net
2nd Vice-President	Dan Sackett, CPE Calif. Comfort Systems	858.564.1160	858.530.4074	dsackett@calcsusa.com
3rd Vice-President	Stephen Fisher, CPE Fisher Consulting Group	760.639.8630		stephen.fisherFCG@cox.net
Secretary	Keith Estes, CPE ECMC (Estes Construction Management Co.)	858.437.1191	858.538.7681	dke.ecmc@gmail.com
Treasurer	Laura Parker, CPE ROEL Consulting Services	619.906.2867	619.278.6604	laurap@roel.com
Executive Secretary	John W. Heusner, CPE Cumming	858.566.6217	858.673.9263	johnwheusner@san.rr.com
Immediate Past President	Hennie Degenaar, CPE Gilbane Building Co.	858.717.3198	858.658.6701	hdegenaar@aol.com
Executive Administrator	Margy Ashby	619.749.1890 619.593.9988	619.593.9989	info@aspechapter4.org asped4@gasvcs.net

2010-2011 Chapter Board of Directors

Director	Phone	Fax	Email
Lou Farallo, CPE Farallo Professional Estimating	858.361.1721	858.483.3061	lfarallo@sbcglobal.net
Stephen Hainlin, E (Alt.) Calif. Comfort Systems	858.564.1160	858.530.4074	shainlin@calcsusa.com
Dan Luckhardt, CPE O'Connor Construction Management, Inc.	619.980.4025	858.467.9400	dluckhardt@ocmi.com
Michael Moyers, CPE Best Interiors, Inc.	858.737.7316	858.737.7317	michael.moyers@bestinteriors.net
Kevin Murphy, CPE (Alt.) Legacy Building Services, Inc.	619.398.8806	619.858.0585	kmurphy@legacybldg.com
Eric Scheidlinger, E (Alt.) Reno Contracting, Inc.	619.220.0224	619.220.0229	escheidlinger@renocon.com

Published by San Diego Chapter 4
 American Society of Professional Estimators

S.D. Mator

Reserve TODAY!

For the Tuesday, April 19, 2011
 ASPE San Diego Chapter 4 Dinner Meeting

SAN VICENTE DAM RAISE PROJECT UPDATE

CONTACT US

ASPE San Diego Chapter
 127 N. Westwind Drive
 El Cajon, CA 92020-2955

Phone: 619.749.1890
 Fax: 619.593.9989
 Email: info@aspechapter4.org
 Web: <http://www.aspechapter4.org>

THE ASPE SAN DIEGO CHAPTER GRATEFULLY
 ACKNOWLEDGES THE GENEROUS SUPPORT OF OUR

CORPORATE SPONSORS

Baker Electric, Inc.
<http://www.baker-electric.com>

Barnhart Balfour Beatty
<http://www.Barnhart-BalfourBeatty.com>

**Bergelectric Corp.
 Contractors & Engineers**
<http://www.bergelectric.com>

**California Comfort
 Systems USA, Inc.**
<http://www.comfortsystemsusa.com>

**CP&M (Construction
 Planning & Monitoring)**
<http://www.edmondsconsultants.com>

**Johnson, Finch & McClure
 Construction, Inc.**
<http://www.jfmcon.com>

Reno Contracting Inc.
<http://www.renocon.com>

Trinity Grading, Inc.
<http://www.trinitygrading.com>

**Waller-Opsal
 Consulting**
<http://www.walleropsal.com>

and

MONTHLY ADVERTISERS

BAKER ELECTRIC, INC. [p. 2](#)

BERGELECTRIC CORP. [p. 4](#)

CUMMING [p. 8](#)

MADSEN, KNEPPERS & ASSOCIATES, INC. [p. 7](#)

TRINITY GRADING, INC. [p. 11](#)

U.S. CONCRETE PRECAST GROUP [p. 7](#)