

What Good Is BIM to the Estimator?

DATE: Tuesday, January 17, 2012

TIME: 5:30 PM—Social Hour and
Check-in of Attendees

6:30 PM—Dinner Service
begins . . . Program to follow

January Dinner Meeting Sponsor:
BERGELECTRIC CORP.

Page 10

PROGRAM:

**WHAT GOOD IS BUILDING INFORMATION
MODELING (BIM) TO THE ESTIMATOR?**

MODERATOR:

John Wayne Heusner, CPE
Director of Cost Management
Cumming, San Diego

PANEL MEMBERS:

Keith Estes, CPE
Estes Construction Management Co.

Alton Sabaot, Senior Cost Manager
Cumming, San Diego

LOCATION:

The Butcher Shop Steakhouse
5255 Kearny Villa Road, San Diego

COST: \$40 per person (\$25 for students)

*Cancellations must be received by NOON on Monday,
January 16th or no shows will be billed accordingly.*

[Click here for Dinner Mtg Reservation Policy](#)

RSVP: Mike Moyers at 858.737.7316
or michael.moyers@bestinteriors.net



Entrée Choices: Top Sirloin OR Fresh Fish OR Vegetarian Pasta

January Program Notes:

What Good is BIM to the Estimator?

During our roundtable discussions at the August 2011 dinner meeting, San Diego Chapter #4 members and guests expressed their interest in having a program dedicated to a further discussion about the ramifications of BIM for the construction cost estimator. We have been planning this event for several months, and I believe that the panel assembled by our Moderator, John Wayne Heusner CPE, Director of Cost Management for Cumming, will

[\(continued on pg 3\)](#)

INSIDE THIS ISSUE ...

January Program Notes	1,3
From Our President	2
From the President's Perspective	4-5
ASPE Code of Ethics	4
Meet a Member of Your Chapter Board: Peter Endy, E	5
The 6 th Annual San Diego Chapter #4 Golf Tournament Is Approaching	6
Online Construction Classes for the Winter Term	7-8
Ask A CPE: What Does It Mean to Be a Certified Professional Estimator?	9
Bergelectric Corp.— Jan. Meeting (and Corporate) Sponsor ..	10
Employment Opportunity with A.O. Reed & Co.	11
10 Mega-Construction Projects That Could Save the Environment — <u>and</u> the Economy	12-15
Become an ASPE Newsletter Sponsor or Advertiser	16
ASPE Membership	16
ASPE Mission Statement	16
San Diego Chapter Calendar of Events	17
2011-2012 Officers, Board of Directors, Committees.....	18
Corporate Sponsors & Monthly Advertisers	19

ATTACHMENTS: ASPE San Diego Chapter 4 Golf Tournament:
(pages 20-24) "Growth Through Mentoring and Education"

— Friday, March 16, 2012 —

Hopefully everyone has recovered from the holiday season and returned to the daily grind of estimating, project management, or other construction related endeavors.

San Diego Chapter #4 has planned a number of timely dinner meeting programs to better educate its members and guests to deal with the challenges of 2012. Topics will include BIM, Cloud Computing and Social Networking, Ethics, Green Construction, and more exciting Site Tours. In addition, we will be conducting our annual golf tournament on Friday, March 19th and educational seminar on Friday, April 20th. If you are asked to help with one of these activities, please consider volunteering to assist those committees responsible for their success.

The golf tournament supports our student scholarship efforts or contributions to local schools of higher learning. We are dependent upon the funds raised by player entry fees, tee sponsors, company sponsorships, and door prize donations. Keith Estes, Laura Parker and Fred Nagel have previously requested our assistance in contacting individuals and member-firms to participate in this year's event. Likewise, proceeds from the seminar also aid in underwriting the same beneficiaries. Attendees' registration fees, payments by exhibitors, and corporate sponsors provide the financial backing to generate the necessary income. Javier Carrillo and Don Waller need our encouragement and involvement in order to effectively carry out this venture. Each member can make a difference in the positive impact that these important functions play in fulfilling the mission of ASPE for the San Diego construction community.

Let's all commit as Officers and Directors, Members, and Member-Firms to work together for the next seven months of the current fiscal year to ensure another constructive and productive result for Chapter #4.



Frank Young, FCPE

Frank E. Young, FCPE

CSOS Consulting

President, ASPE San Diego Chapter #4




Todd Ebbert
General Manager
Southern California
tebbert@us-concrete.com

2735 Cactus Road
San Diego, CA 92154
Direct: (619) 240-8002
Tel: (619) 240-8000
Cell: (619) 843-3849
Fax: (619) 661-1038
www.sdpc.com

PROVIDING INNOVATIVE SOLUTIONS, QUALITY, AND SERVICE

6155 CORNERSTONE COURT, SUITE 110
SAN DIEGO, CA 92121



MKA Madsen, Kneppers & Associates, Inc.
Construction Consultants & Engineers

DONALD W. ELDER, CPE

TEL 858.597.0383 FAX 858.597.0387
CELL 858.722.2787 DELDER@MKAINC.COM
800.822.6624 :: WWW.MKAINC.COM



Bergelectric
Careers

Bergelectric, one of the nations largest and most experienced electrical contractors, is currently seeking experienced estimators in their San Diego Office. Available positions include...

- Excellent Salaries
- Paid Time Off Package
- Company Funded Pension Plan
- 401K Plan
- No Cost Employee Medical & Dental
- No Cost Long Term Disability & Life
- Relocation Assistance
- Bonuses*

*Bonuses are not guaranteed, however have been distributed 16 out of the last 17 years.



650 Opper Street · Escondido, CA 92029 · www.bergelectric.com · EOE M/F/D/V
Contact: Jason Hefley or Mike Hughes at (760) 746-1003 · jhefley@bergelectric.com

From the President's Perspective

by Frank E. Young, FCPE

FELLOWSHIP WITHIN ASPE REPRESENTS COMMUNITY

This month we continue our reflection on the five fundamental purposes for the Society by examining those tenets associated with fellowship. Community can be seen as a value used to bring together elements such as solidarity, commitment, mutuality, and trust. During the French Revolution, many banners were inscribed with the words fraternity, liberty and equality. Socialists of the day like William Morris talked similarly of fellowship. Furthermore, we note the observations contained in "The Commonweal" published in the late 19th century:

"Fellowship is heaven, and lack of fellowship is hell; fellowship is life, and the lack of fellowship is death; and the deeds that ye do upon the earth, it is for fellowship's sake that ye do them."

Definitions for "fellowship" include the following adages:

1. The condition of sharing similar interests, ideals, or experiences, as by reason of profession, religion, or nationality.
2. The companionship of individuals in a congenial atmosphere and on equal terms.
3. A close association of friends or equals sharing similar interests.
4. A company of people that shares the same interest or aim.
5. A feeling of friendship, relatedness or connection between people.

Who would disagree with any of the above statements in describing why we exist as an organization, or validate the services that we provide to our members and member-firms?

Examples of fellowship experienced as a part of ASPE activities include dinner meetings, special Chapter programs such as education seminars and Ways and Means functions, mentoring efforts, Regional conferences, and our annual National Convention. These events all provide networking opportunities to meet people, make contacts, and form relationships in hopes of gaining access to business-related benefits of career advice, job leads, business referrals, useful information and ideas, and emotional support. Personally, I view the attributes of networking within ASPE and the construction industry as having a significant impact on my career and professional development. As a general contractor, the chance to meet subcontractors, material and equipment suppliers, architects and engineers, and a myriad of consultants face to face helped establish a rapport that proved invaluable in the estimating world. The ability to intermingle with colleagues to discuss matters of mutual interest and share common concerns and problems encountered in everyday occurrences continues to benefit one's professional development.

[\(continued on pg 5\)](#)



Frank Young, FCPE

[Click here](#) for the
American Society of
Professional Estimators'
CODE OF ETHICS
(Introduction, Preamble,
and 9 Ethical Canons).



Frank K. Sonnenberg, noted author and marketing strategist, has identified three main advantages that accrue to those individuals who practice effective networking:

- Referrals** – Satisfied clients that suggest others who may need your company's products or services or provide an endorsement in certain marketing efforts.
- Relationships** – Forming a close relationship with a client might afford invaluable insight into their needs; such interactions can gain information about competitors, their relative strengths and weaknesses, and acquire an approach to stay ahead of them.
- Leads** – Excellent source for new business opportunities, career options, or further networking possibilities.

Networks can facilitate building your profile and your reputation. Don't ever forget the old adage, "It's not *what* you know, but *who* you know." It is particularly important to be aware of "who knows you and what they are saying about you" in the corporate environment. Successful businesses recognize the virtues of having a group of people talking about them or their company, and associating them with excellence in their particular field of expertise. We still cope with tough times in the construction economy, and firms have been stretched to their limits, budgets slashed for future projects, and the job market remains tenuous at best. Steps can be taken to give ourselves a chance of surviving and managing the crisis. Networking can be categorized as one of those means to nurture a positive and proactive attitude in dealing with today's state of affairs.

Knowledge is power and truly a measure of increasing your skill sets in both the near term and as we move forward to less stressful times.

Association memberships serve as excellent supplements for one's resume in conveying to employers that individuals are dedicated to their field of study, and will open doors to a greater exposure in the job market. Finding conduits to serve your interests and promote your role in the construction industry and as an estimator becomes a necessary goal in advancing your standing among your peers. Anthony Cohen from Manchester England maintains that community involves two related concepts: members of a group have something in common with each other, and the thing held in common distinguishes them in a significant way from members of other organized bodies. As such, community implies both similarities and differences in structure and purpose. Nationally, ASPE urges professionals to join our association and become part of the community within their chosen field of endeavor.

Frank E. Young, FCPE
CSOS Consulting

President, ASPE San Diego Chapter #4

Meet Your Chapter Board Members ... Focus on PETER ENDY, E Senior Estimator—A.O. Reed & Company



Peter Endy

Peter Endy comes to us from Chapter #45 in Seattle. Peter is originally from Connecticut, where he worked for New England Mechanical Services (NEMSI), an Emcor company, as a plumber, fitter and fire protection foreman. In 1998, after 20 years as a field employee, Peter was offered a chance to become the plumbing & piping estimator for NEMSI and has been an estimator ever since.

In 2006, Peter received an offer to move to Seattle and took a position as plumbing & piping estimator with Hermanson Company, and in 2010 Peter came to San Diego after an invitation from A.O. Reed & Co. to work as a senior plumbing & piping estimator. Peter works closely with sales executives and project managers for projects spanning the board of the local construction market specializing in hospitals and other health care facilities. A.O. Reed's projects range from small retrofits to large multi-million dollar commercial, health care, industrial and central utility plant projects. Peter's strong computer skills and strong plumbing background have helped A.O. Reed upgrade their computerized

estimating systems, keeping them sharp in this competitive bid market.

In 2010 Peter joined us here at ASPE San Diego Chapter #4. In 2011 he was elected to the Board of Directors and serves on the Ethics committee with Hennie Degenaar, CPE. Welcome to the Board, Peter! We appreciate your service to ASPE San Diego Chapter #4. ■

The 6th Annual San Diego Chapter #4 Golf Tournament Is Approaching

We anticipate that this year's Golf Tournament will be our best yet, and we are dedicating it to the students we are helping with the monies we raise. Chapter #4 of the American Society of Professional Estimators (ASPE) uses the annual Golf Tournament as a means of securing funds for each year's scholarships. To make this a successful event, we need 80 golfers ... that's only 20 foursomes, in addition to sponsors.

The types of sponsorships needed are as follows:

- ▶ Registration bar sponsors (\$500)
- ▶ Happy hour food (\$400)
- ▶ Happy hour bar (\$350)
- ▶ Drink carts and beverage station (\$400)
- ▶ Hole / exhibitor sponsors (\$250)
- ▶ Games sponsors (\$150)

Chapter #4 has prided itself as being one of the more generous chapters in the Society. Last year, Chapter #4 gave scholarships to SDSU (\$1,000), San Diego NewSchool of Architecture & Design's DCMP (\$500), NAWIC's Magic Camp (\$500), and ASPE National (\$500).

This year's Golf Tournament will be held on Friday, March 16th at Riverwalk Golf Club in Mission Valley, with a 12:00 NOON shotgun start. We need golfers and sponsors to help make this year's Golf Tournament a success.

Attached to this newsletter are **FLYERS** for both [players](#) and [sponsors](#). Please take a minute to walk around your office and garner interest in this event. Again, we are in need of both sponsors and players for this year's tournament. If you are not a player, please look at assisting in another way. Perhaps you can volunteer and help on the day of the event ... There are many opportunities to help. Like most chapters, Chapter #4 survives by the assistance of volunteers and people stepping up and helping.

As the Chairman of this year's Golf Tournament, I am asking for your assistance. Please fill out a flyer ... as a golfing foursome, as a sponsor, or call to help as a volunteer. The success of the event is up to you!

Thank you.

Keith Estes, CPE

Estes Construction Management Co.
858.437.1191

*ASPE San Diego Chapter #4
2012 Golf Tournament Chair*

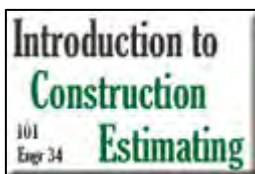


Online Construction Classes for the Winter Term

The following article contains information about online construction courses offered at San Diego State University and selected non-profit construction industry organizations. **Classes start January 16, 2012.** Registrations are currently being accepted by all providers.

Registration options for **Winter Semester 2012** classes include:

- * 101 Introduction to Construction Estimating
- * 102 Essential Construction Math
- * 103 Construction Blueprint Reading
- * 105 Estimating and Bidding 1
- * 106 Estimating and Bidding 2
- * 107 Construction Materials and Practices
- * 302 LEED for New Construction: Applying the Guidelines
- * 304 Green Building Commissioning
- * 201S Leadership and Motivation
- * 203P Problem Solving and Decision Making
- * 206T Cost Awareness and Production Control



101 INTRODUCTION TO CONSTRUCTION ESTIMATING (online)

Learn the basic principles of construction estimating. Topics to be studied include: organization of the estimate, types of estimates, elements of an estimate, quantity take-off techniques, pricing techniques, adjusting the estimate for a variety of variable factors, estimating labor, materials and equipment, and profit and overhead markups. Students will learn about the different types of estimates and how to organize an estimating document. This course will build a foundation of knowledge that the student will use while

estimating virtually any individual trade or project type. http://www.constructionclasses.com/estcert/101_itce.htm



102 ESSENTIAL CONSTRUCTION MATH

This class is intended to develop mathematical skills that can be applied to the construction trades through practice and application. This course is an introduction to other courses in construction. While this class is not a prerequisite for any other classes, it does provide a foundation for them. http://www.constructionclasses.com/estcert/102_math.htm



103 CONSTRUCTION BLUEPRINT READING (online)

Learn how to read architectural, structural, civil, mechanical and electrical blueprints. Students will practice looking up information and solving common construction problems by reading the blueprints. This course is designed to provide foundational knowledge and practice at reading blueprints. http://www.constructionclasses.com/blueprint/blueprint_syllabus.htm



105 ESTIMATING AND BIDDING 1 (online)

This course features hands-on estimating and quantity take-off activities associated with General Conditions, Earthwork, Site Work, Concrete and Masonry. By the end of this class, students should be able to estimate the cost of general conditions, prepare quantity take-off of excavation and backfill, prepare a quantity take-off of concrete and formwork, and use unit prices to price an estimate. <http://www.constructionclasses.com/estcert/eb1.htm>



106 ESTIMATING AND BIDDING 2 (online)

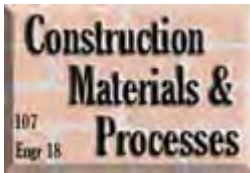
This course features hands-on estimating and quantity take-off activities associated with Metals, Wood, Doors and Windows, Finishes, Electrical, and Mechanical Estimating. By the end of this class, students should be able to estimate the conceptual cost of structural metals, prepare quantity take-off and estimate of rough carpentry, prepare a quantity take-off of roofing and waterproofing, use unit prices to price doors and windows, prepare quantity take-off and estimate various finishes, prepare a quantity take-off and conceptual estimate of mechanical systems, and prepare a quantity take-off and conceptual estimate of electrical systems.

<http://www.constructionclasses.com/estcert/eb2.htm>

(continued on pg 8)

Online Construction Classes for the Winter Term

(continued from page 7)



107 CONSTRUCTION MATERIALS AND PROCESSES

Learn about quality control procedures for various materials, material manufacturing processes and the physical limitations of the materials being studied. The regulatory environment under which materials are manufactured and incorporated into new structures will be studied. http://www.constructionclasses.com/estcert/107_mats.htm

302 LEED FOR NEW CONSTRUCTION: APPLYING THE GUIDELINES



This course will identify and help students understand the objectives of Sustainable Sites, Water Efficiency, Energy and Atmosphere, Material and Resources, Indoor Environmental Quality, Innovation and Design Process Credits and Prerequisites.

http://www.constructionclasses.com/300/302_LEEDguide.htm

304 GREEN BUILDING COMMISSIONING



This course will cover the various aspects and requirements of building commissioning through the pre-design phase, design, construction and post-construction phases of a building construction project. Students will study the make-up of the Commissioning Team and the role of scheduling and

coordination in the commissioning process. Subjects covered will include verification and testing, documentation, training, systems and ongoing commissioning. http://www.constructionclasses.com/300/304_commissioning.htm

Construction Supervision Classes



201S LEADERSHIP AND MOTIVATION (online)

Learn how to recognize your style of leadership and how to utilize other styles when appropriate. The affect that attitudes and abilities have on job performance and how to positively influence attitudes and abilities will be studied. The leader as goal setter, communicator and role model will all be discussed. Job site applications of all subjects will be stressed. <http://www.constructionclasses.com/css/descriptions/201S.htm>



203P PROBLEM SOLVING AND DECISION MAKING FOR CONSTRUCTION SUPERVISORS (online)

Learn how to identify, prevent, and solve construction problems. Subjects include identifying the source of problems, barriers to problem solving, and symptoms that often mask the real problem. Human performance problems, scheduling problems and technical problems will be covered. The 6-step method of problem solving and decision making will be stressed.

<http://www.constructionclasses.com/css/descriptions/203P.htm>



206T COST AWARENESS AND PRODUCTION CONTROL (online)

Learn the skills necessary for effective control of construction costs at the job site. Apply principles and practices associated with cost awareness and production control to each element of the project. Control of labor and equipment costs.

<http://www.constructionclasses.com/css/descriptions/206T.htm>

To learn more about online CERTIFICATE PROGRAMS, go to:

http://www.constructionclasses.com/certificate_programs.htm

QUESTIONS? Send an email to Bob George at bob@ConstructionClasses.com or visit the Frequently Asked Questions page at http://www.constructionclasses.com/faq_potential.htm. ■

ASK A CPE: What Does It Mean to be a Certified Professional Estimator (CPE)?

by Michael Tegg, CPE — TBD Consultants

What My CPE Certification Means to Me . . .

I obtained my CPE certification about a year ago. I am a quantity surveyor, trained in South Africa and worked extensively in South Africa and the UK. In the Commonwealth Countries, quantity surveying is a recognized profession. In the USA, there is no degree program specializing in construction cost. In my opinion, the CPE certification fills this void.



My CPE means:

- I am recognized as a professional in my specific discipline.
- I am confident that clients know I can do what I say I can do.
- I have a society of people similar to me with whom I can meet.
- CPE is a requirement on many federal and state RFQs and RFPs. I can now peruse these.
- During negotiations with general contractors, when asked, “What qualifies you?” I now have a recognized qualification to which I can refer them.
- Having my CPE personally validates my own experience. It is definitely a requirement to have at least 5 years estimating experience to pass the CPE exams and technical paper.

Obtaining my CPE has been a necessary and worthwhile endeavor. With consistent effort over a six-month period, it is possible for any experienced estimator to obtain this certification and definitely worth the effort. ■

Todd Caha, CPE
Senior Estimating Manager




Baker Electric, Inc.
4 Generations since 1938

1298 Pacific Oaks Place • Escondido, CA • 92029
858.566.1980 • 760.745.2001 • Fax 760.745.0292
Direct 760.690.5142
tcaha@baker-electric.com


www.ccorpUSA.com

JOHN WAYNE HEUSNER CPE, LEED AP, EDAC
Director
Cost Management



CUMMING
Program & Project Management
Cost Management & Estimating
Dispute Resolution & Avoidance
Planning & Scheduling

Phone 858.217.3579 | jheusner@ccorpUSA.com



Trinity Grading, Inc.
Lic.# 847643

Tim Lackey
President

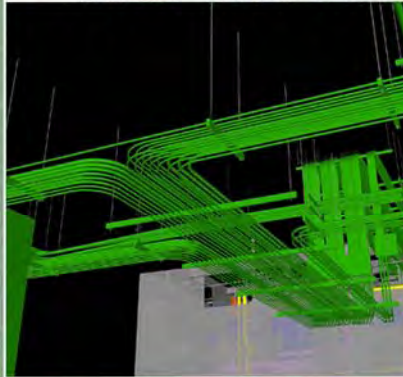
P.O. Box 1122
Fallbrook, CA 92088

Phone: (760) 728-2981
Fax: (760) 728-5781
Cell: (619) 520-5576
tlackey@trinitygrading.com
www.trinitygrading.com

ASPE SAN DIEGO JANUARY MEETING SPONSOR & CORPORATE SPONSOR

Leaders In Lean Construction

- Innovative Practices
- Integrated Project Delivery
- Target Design Value
- Continuous Improvement
- Advanced Technology
- Preconstruction
- BIM Coordination
- Prefabrication
- Green Value
- Design Build
- Design Assist
- Integrated Service
- LEED Accredited



Bergelectric's progressive approach to improving customer service is spotlighting the use of advanced technology that provides a well-articulated design and quantifiable value. Bergelectric is focused on preplanning and proactive design that has naturally eradicated less-efficient approaches. Bergelectric operates in a corporate culture of innovation and teamwork that makes them leaders in Lean Construction and trailblazers in the marketplace.

Bergelectric

www.bergelectric.com



Lic.# C10-85046 • Tel (760) 746-1003 • EOE: M/F/D/V

San Diego • Orange County • Sacramento • Los Angeles • Denver • Raleigh • Las Vegas • Orlando • Austin • Portland • Phoenix • Ventura





EMPLOYMENT OPPORTUNITY

A.O. Reed & Co. in San Diego is actively looking for an estimator for Mechanical Trades. A.O. Reed's projects range from small retrofits to large multi-million dollar commercial, health care, industrial and central utility plant projects. The company offers competitive salary and an excellent benefit package.

The ideal candidate should be a seasoned estimator with a proven track record in multi-million dollar projects. The candidate must be proficient in any of the following disciplines: Sheet Metal (ductwork), HVAC piping, process piping and/or plumbing estimating but ideally would be a "triple hitter" with experience in Sheet Metal, Piping and Plumbing.

We are also seeking a "conceptual" estimator. The Conceptual Estimator will be responsible for generating conceptual estimates, as well as assisting in the continuing development of resources required to generate construction budgets and estimates at the conceptual, design build and Plan & Specification levels.

Requirements include:

- 10+ years estimating and cost control experience
- Strong knowledge of and interconnection between mechanical piping and HVAC systems that stems from field experience
- Experience in providing estimates that range in scope and complexity from a simple type analysis estimate to an extremely complex multi-million dollar lump sum bid.
- Knowledge of system components
- Strong experience in interpreting blueprints
- Experience with QuickPen Estimating system
- Performing site visits and investigations
- Solicits subcontractors during the bidding process.
- Analyzes and scopes subcontractor bids.
- After the bid, collects and organizes all bid information for input into job cost database platform.
- Assist field operations with change order pricing.
- Maintain working knowledge of MEP codes and changes to codes.
- Prepare budget comparisons between current and previous estimates

The conceptual estimator would also require:

- Generating conceptual estimates from basis of design reports, and / or limited drawings
- Communicates with architects and consultants to clarify scope of work, materials, and schedule requirements
- Documents discussion with architects and consultants concerning scope of work, materials, and schedule requirements

Interested parties should contact David Clarkin at A.O. Reed by calling 858.565.4131. ■

10 Mega-Construction Projects That Could Save the Environment — and the Economy

by Charlie Jane Anders and Gordon Jackson

This article appeared online at <http://www.io9.com> on Nov 29, 2011, and is reprinted with publisher's permission.



Space Elevator by Kenn Brown

We humans are builders. One of the ways we leave a mark on the universe is by creating massive structures that show that some opposable digits have been here. So when things get tough, like due to an economic meltdown or a cascading environmental crisis, what can we do but build?

Here are 10 massive engineering projects — some pretty real, some quite fanciful — that could help turn our economic and environmental crises around.

10. Renewable Energy

Let's start with a super obvious one — according to Bloomberg News, 2011 marked the first time that investment in renewable energy was greater than investment in fossil fuels: \$187 billion versus \$157 billion. The cost of solar energy is dropping rapidly, but even with a loss for the most recent quarter and a trade complaint, the Motley Fool still praised Chinese solar power company Yingli Green Energy as a solid investment. At a time when global investment is down in general, investment in solar and wind power is soaring, and could be the key to reducing CO2 emissions before we reach another point of no return.

9. Masdar City

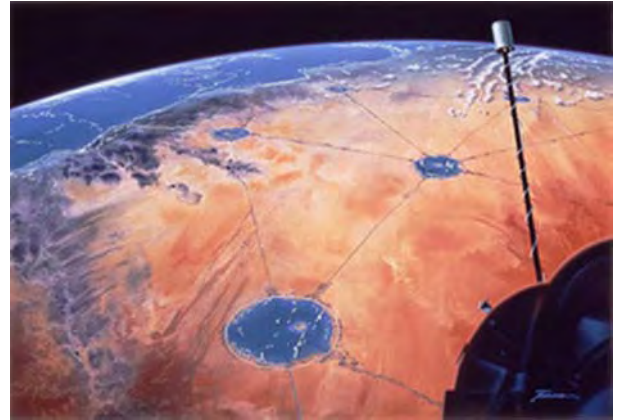
As we wrote back in 2008, Abu Dhabi plans to build the world's first carbon-neutral city over 10 years, near the Abu Dhabi airport. According to NPR, the city would use shade and Northeast-facing buildings to reduce the need for air conditioning, and cars would be banned within the city limits. Instead, solar-powered vehicles would navigate within the city. And 80 percent of water will be recycled. And all human waste will be "repurposed" and used as energy. Shaikh Zayed, founding father of the United Arab Emirates, describes Masdar City as a way to move past a dependency on oil for the region's fortunes.



[\(continued on pg 13\)](#)

8. The Desert Aquanet

The Shimizu Corporation has proposed to create a matrix of artificial and interconnected seawater lakes in the desert, each with an artificial island in its center for farming and city construction. Theoretically, the lakes would cool the air above each island, making the land arable (after desalination) and the adjacent territory livable for humans. It's unknown what effects the lakes may have on global weather patterns or, even the potential fallout of the lakes themselves — but first the project would have to get past the biggest hurdle of them all: the question of sovereignty.



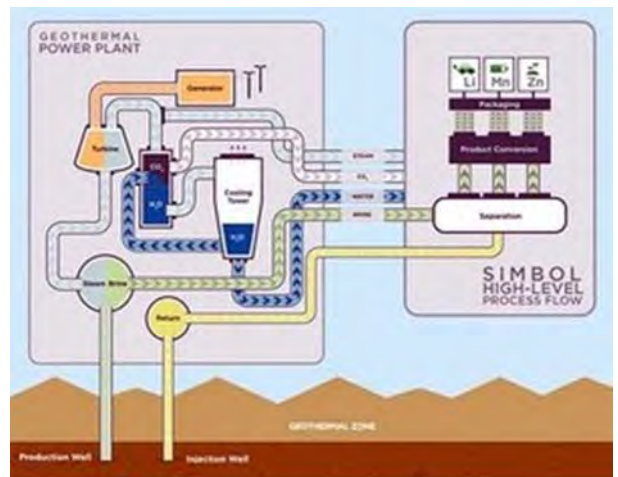
7. AMFORA

Architect Moshé Zwarts wants to build an underwater city beneath Amsterdam. And Zwarts says it isn't as ludicrous as it sounds: "It is both feasible and sustainable, creating a city beneath the city is not futuristic, it is a necessity in this day and age." Zwarts says they could drill under the city without disturbing the existing street traffic or causing any construction noise, once they had resealed the canals overhead. "Amsterdam sits on a 30-metre layer of waterproof clay which will be used together with concrete and sand to make new walls." And once construction was finished, AMFORA would be carbon-neutral, because heat pumps would provide the energy for heating and cooling, and excess energy would be used for temperature control in buildings aboveground. Some question, though, whether what Amsterdam really needs is more parking and shopping.

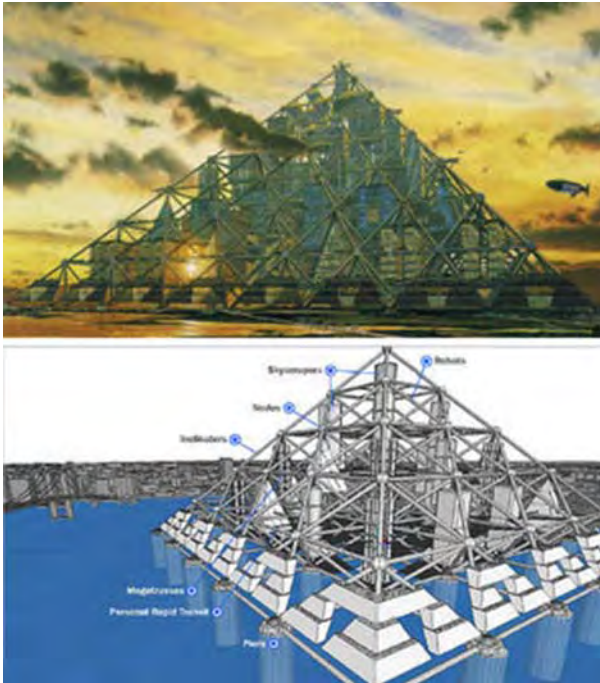


6. Geothermal Power Plants.

California start-up company Simbol Materials believes they can extract lithium, zinc and manganese from the brine produced by geothermal power plants, potentially producing the world's purest and lowest costing lithium on the market. As demand for lithium batteries skyrockets, this could be the cleanest and most potentially profitable way to satisfy all that demand. Simbol already has a plant that filters 20 gallons a minute. And a commercial plant, being built in 2012 near the Salton Sea, will have the capacity to generate 16,000 tons of lithium carbonate per year. By 2020, Simbol plans to triple production.



[\(continued on pg 14\)](#)



5. Megacity Pyramids

Another absurdly ambitious project from the Shimizu Corporation: a three-mile-long pyramid, 14 times higher than the Great Pyramid of Giza (made from 204 smaller pyramids) capable of housing 750,000 people on Tokyo Bay. Inspired by the Tyrell Corporation in Blade Runner, the lightweight carbon fiber pyramid would boast research facilities, shopping centers, private homes and restaurants. The businesses and residences would be powered by solar power, wind power, and even algae/pond scum. This pyramid is apparently already in development.

4. Seasteading Arcologies

In recent years, cutting-edge design gurus have proposed combining two old trends: the arcology, a self-contained monolithic city, and seasteading. Floating, self-sufficient arcologies have been proposed in places like Boston and San Francisco, but perhaps the most famous is the New Orleans Arcology Habitat, or NOAH. Among other things, the structure is intended to be sustainable, using "secured wind turbines, fresh water recovery and storage systems, passive glazing system, sky garden heating/cooling vents, grey water treatment, solar array banding panels, and river based water turbines." There would be internal electrical transport systems, both vertical and horizontal, eliminating the need for cars within the structure.



3. Coral Venice

Dr. Rachel Armstrong believes it's possible to create chemically engineered building materials in the form of synthetic limestone reefs. Created from protocells, fatty bags of DNA that move and react like living organisms, her buildings would grow, self-repair and respond to environmental pressures just as if they were living creatures. Armstrong believes that future architecture should be connected to the natural world, and communicate with nature. If that's not cool enough, Armstrong's technology could theoretically save Venice, Italy from sinking by lifting it from the ocean. *Top image: Mitchell Joachim. TERREFORM1: BlimpBumperBus, via Archimorph.*

[\(continued on pg 15\)](#)



2. The Space Elevator

This is probably our best hope for colonizing space — an elevator that could lift tons of material off our planet. As we explained back in February:

Because the space elevator pulls cargo out of our gravity well, rather than pushing it using combustion, it would save a lot of energy and be capable of bringing far more materials offworld quickly. It would also be sustainable, making one or more runs per day. That it's reusable already makes it many thousands of times cheaper than the one-time-use Soyuz rockets that bring supplies to the International Space Station, only to destroy themselves in Earth's atmosphere.

A single Space Shuttle launch cost \$450 million, but the space elevator could be much cheaper and much more energy-efficient. We attended a conference about space elevators in November, where people were talking seriously about how to make this ambitious project work.

1. Lunar Ring

One more cool idea from the Shimizu Corporation. Shimizu's website describes a "masterplan" to place a belt of solar panels along the moon's equator, spanning an awesome 11,000 miles in length. A power conversion facility built on the moon (by robots!) would relay stored energy back to Earth through microwaves, later reconvertng them to electricity at a power plant on Earth. Though only in the planning stages, Shimizu's theoretical ring may ultimately suffer severe degradation from radiation and meteor showers, and technically no one is certain what the effects of such a massive beam of microwaves would have on the environment and wildlife (possibly none), but the idea of a robot-manned lunar ring around the moon would be too cool (and beneficial!) to pass up.



To access this article online, [click here](#) or go to:

<http://io9.com/5863422/10-mega+construction-projects-that-could-save-the-environment--and-the-economy>



\$350 CORPORATE SPONSORSHIP, includes:

- Sponsor Recognition in each of the 12 Monthly Newsletters
- Includes a Hot Link to Either Your Website or Email
- A Full-Page Sponsor Profile in 1 Issue

MONTHLY ADVERTISEMENT:

12 Mo. Issues – 1/4-Page Ad for **\$450**
OR

12 Mo. Issues – Business Card for **\$200**

EMPLOYMENT AD:

\$50 per month (FREE to ASPE Members)

FOR MORE INFORMATION:

Contact **KEITH ESTES, CPE**

858.437.1191

OR dke.ecmc@gmail.com



ASPE MISSION STATEMENT

The American Society of Professional Estimators serves construction estimators by providing education, fellowship and the opportunity for professional development.

ASPE Membership

An accurate cost estimate is the first of many key components of a successful construction project. Plan interpretation, labor and material costs, scheduling costs, and level of difficulty recognition are a fraction of the skills necessary to become a successful estimator.

Why join the American Society of Professional Estimators? ASPE is the most recognized and credentialed group of construction cost professionals in our nation's construction industry. ASPE provides education, industry information, and fellowship to all levels of our members. It is made up of professionals of several different classifications.

- A- **Estimator**—shall have at least five years' experience as an estimator in one or more of the construction estimating disciplines.
- B- **Constructor**—shall be an active construction professional experienced in one or more of the construction disciplines with at least 5 years' experience.
- C- **Associate Member**—is a Member with less than 5 years of experience as an estimator or an active construction professional. When the Member achieves 5 years of experience, the Member shall be given one of the Member classifications listed above.

One of the ultimate goals of a member in ASPE is to achieve status as a "Certified Professional Estimator," otherwise know as "CPE." CPE status is recognized by Builders, Government Agencies, Developers, and many other Corporate entities as the highest level of qualification as an estimator. Educational training is available to become part of this elite group of professionals.

ASPE San Diego Chapter 4 is perennially recognized as one of the top chapters of the nation's 50 chapters. The local chapter meets on the third Tuesday of each month. This general membership meeting offers education and insight into our industry. Each membership meeting is highlighted by presentations and guest speakers, with information pertinent to our ever-changing industry.

If you would like to become part of this exciting group of professionals, please contact Michael Moyers CPE at:

michael.moyers@bestinteriors.net 858.737.7316

ASPE San Diego Chapter 4

CALENDAR OF EVENTS

- ◆ **Tuesday, January 17, 2012**
5:30 P.M. Registration/Social Hour
6:30 P.M. Dinner
ASPE San Diego General Membership Dinner Meeting
Program: BIM Roundtable Discussion:
“What Good Is Building Information Modeling (BIM) to the Estimator?”
Moderator: John Wayne Heusner, CPE
Director of Cost Management
Cumming Corp., San Diego
Panel Members: Keith Estes, CPE
Estes Construction Management Co.
Alton Sabat
Senior Cost Manager
Cumming Corp., San Diego
Location: The Butcher Shop Steakhouse
5255 Kearny Villa Road, San Diego
- ◆ **Tuesday, January 24, 2012—5:30 PM**
ASPE San Diego Board of Directors’ Meeting
Location: California Comfort Systems
9750 Distribution Ave, San Diego
- ◆ **Tuesday, February 21, 2012**
5:30 P.M. Registration/Social Hour
6:30 P.M. Dinner
ASPE San Diego General Membership Dinner Meeting
Program: “Cloud Computing & Update on Social Networking for Estimators”
Speaker: James Benham—JB Knowledge
In-house Talk: John Wayne Heusner, CPE
Cumming Corp., San Diego
Location: The Butcher Shop Steakhouse
5255 Kearny Villa Road, San Diego
- ◆ **Tuesday, February 28, 2012—5:30 PM**
ASPE San Diego Board of Directors’ Meeting
Location: California Comfort Systems
9750 Distribution Avenue, San Diego
- ◆ **Friday, March 16, 2012—11:00 AM to 7:00 PM**
ASPE San Diego Chapter #4’s Sixth Annual Golf Tournament
Location: Riverwalk Golf Club
1150 Fashion Valley Road, Mission Valley
[Click here](#) for *Player flyer*.
[Click here](#) for *Sponsor flyer*.
- ◆ **Tuesday, March 20, 2012**
5:30 P.M. Registration/Social Hour
6:30 P.M. Dinner
ASPE San Diego General Membership Dinner Meeting
Program: Ethics Program
Subject matter to be determined.
Speaker: *To be determined*
In-house Talk: Hendrik Degenaar, CPE
Gilbane Building Co.
Location: The Butcher Shop Steakhouse
5255 Kearny Villa Road, San Diego
- ◆ **Tuesday, March 27, 2012—5:30 PM**
ASPE San Diego Board of Directors’ Meeting
Location: California Comfort Systems
9750 Distribution Avenue, San Diego
- ◆ **Tuesday, April 17, 2012**
ASPE San Diego General Membership Dinner Meeting
Program: Site Tour—*to be determined*
- ◆ **Friday, April 20, 2012**
ASPE San Diego Educational Seminar
Location: National University School of Engineering and Technology
3678 Aero Court, San Diego
- ◆ **Tuesday, April 24, 2012—5:30 PM**
ASPE San Diego Board of Directors’ Meeting
Location: California Comfort Systems
9750 Distribution Avenue, San Diego

[CLICK HERE](#) for ASPE National’s 2011-12 Critical Calendar or go to:
<http://www.aspenational.org/Upload/FilesMenu/ASPE-11-12-Critical-Calendar.pdf>

GET INVOLVED IN YOUR SUPERIOR CHAPTER!!!



2011-2012 Chapter Officers

TECHNICAL COMMITTEES:

Certification:

Lou Farallo, CPE

Education:

Javier Carrillo, CPE

Standards:

Stephen Fisher, CPE

STANDING COMMITTEES:

Chapter Awards/ Nominations:

Frank Young, FCPE

National Awards:

Stephen Hainlin, E

Bylaws:

Keith Estes, CPE

Communications:

(Newsletter & Website)

Ed Wenz, E

Finance/ Ways & Means:

Keith Estes, CPE

Historical:

VACANT

Industry Awareness

Public Relations/ Calendar:

Stephen Hainlin, E

Membership:

Michael Moyers, CPE

Programs:

Frank Young, FCPE

OTHER

COMMITTEES:

Door Prizes/Dinner

Meeting Sponsors:

VACANT

Ethics:

Hennie Degenaar, CPE

Mentoring:

John W. Heusner, CPE

Parliamentarian:

Keith Estes, CPE

Scholarships:

Dan Luckhardt, CPE

Telephone:

Michael Moyers, CPE

Office	Officer	Phone	Fax	Email
President	Frank E. Young, FCPE CSOS Consulting	619.440.5517 619.980.4025C	619.401.7545	pancho77@cox.net
1st Vice-President	Dan Sackett, CPE skOO'kum h ₂ O monitoring, inc.	661.822.4185 760.578.7065C	661.823.7894	dan@skookumh2o.com
2nd Vice-President	Michael Moyers, CPE Best Interiors, Inc.	858.737.7316 619.843.6962C	858.737.7317	michael.movers@bestinteriors.net
3rd Vice-President	Stephen Fisher, CPE Fisher Consulting Group	760.639.8630C		stephen.fisherFCG@cox.net
Secretary	Fred Nagel, CPE Nagel Construction Consultants	619.647.1304	619.448.1304	frednagel@gmail.com
Treasurer	Keith Estes, CPE ECMC (Estes Construction Management Co.)	858.437.1191	858.538.7681	dke.ecmc@gmail.com
Executive Secretary	John W. Heusner, CPE Cumming Corp. USA	858.485.6765	858.673.9263	johnheusner@san.rr.com
Immediate Past President	Ed Wenz, E Reno Contracting, Inc.	619.220.0224 x6242 619.520.3184C	619.220.0229	ewenz@renocon.com
Executive Administrator	Margy Ashby	619.749.1890 619.593.9988 619.302.3257C	619.593.9989	info@aspechapter4.org asped4@gasvcs.net
Webmaster	Sharon Jones	619.749.0597	619.749.7097	acsolution@cox.net

2011-2012 Chapter Board of Directors

Director	Phone	Fax	Email
Lou Farallo, CPE Farallo Professional Estimating	858.361.1721	858.483.3061	lfarallo@sbcglobal.net
Stephen Hainlin, E Calif. Comfort Systems	858.564.1161	858.530.4074	shainlin@calcsusa.com
Dan Luckhardt, CPE Cumming Corp. USA	858.217.3590 858.342.8017C	858.673.9263	dluckhardt@ccorpUSA.com
Don B.R. Waller III, E Waller Consulting	619.819.9356	619.819.9364	don@wallerconsulting.com
Javier Carrillo, CPE Waller Consulting (Alternate)	619.819.9356	619.819.9364	javier@wallerconsulting.com
Peter Endy, E A.O. Reed & Co. (Alternate)	858.565.4131	858.292.6958	peter@hotglassworks.com

Published by San Diego Chapter 4
 American Society of Professional Estimators



S.D. Mator

Reserve Today!

For the Tuesday, January 17, 2012
 ASPE San Diego Chapter #4 dinner meeting ...

**"What Good Is BIM
 to the Estimator?"**

CONTACT US

ASPE San Diego Chapter
 127 N. Westwind Drive
 El Cajon, CA 92020-2955

Phone: 619.749.1890
 Fax: 619.593.9989
 Email: info@aspechapter4.org
 Web: <http://www.aspechapter4.org>

THE ASPE SAN DIEGO CHAPTER GRATEFULLY
 ACKNOWLEDGES THE GENEROUS SUPPORT OF OUR

CORPORATE SPONSORS

Baker Electric, Inc.
<http://www.baker-electric.com>

Balfour Beatty US
<http://www.balfourbeattyus.com>

**Bergelectric Corp.
 Contractors & Engineers**
<http://www.bergelectric.com>

**California Comfort
 Systems USA, Inc.**
<http://www.comfortsystemsusa.com>

**CP&M (Construction
 Planning & Monitoring)**
<http://www.edmondsconsultants.com>

**Johnson, Finch & McClure
 Construction, Inc.**
<http://www.jfmcon.com>

Reno Contracting Inc.
<http://www.renocon.com>

Trinity Grading, Inc.
<http://www.trinitygrading.com>

**Waller + Opsal
 Consulting**
<http://www.walleropsal.com>

and

MONTHLY ADVERTISERS

BAKER ELECTRIC, INC. [p. 9](#)

BERGELECTRIC CORP. [p. 2](#)

CUMMING [p. 9](#)

MADSEN, KNEPPERS & ASSOCIATES, INC. [p. 2](#)

TRINITY GRADING, INC. [p. 9](#)

U.S. CONCRETE PRECAST GROUP [p. 2](#)



San Diego Chapter 4 to Host 6th Annual **GOLF TOURNAMENT**

On Friday, March 16, 2012 at 12:00 PM, ASPE San Diego Chapter 4 will hold its **Sixth Annual Golf Tournament** which will be **“Growth Through Mentoring and Education.”** This major fund-raising event will be held at **Riverwalk Golf Course in Mission Valley**. **Proceeds benefit the ASPE Scholarship Programs with donations going to our Local University Construction Programs and Individual Education Scholarships.**

We’ve tried to help lighten the load by providing more affordable sponsorships. On behalf of our Golf Committee and ASPE Chapter 4, we thank you for your kind and thoughtful consideration and generosity. If you have any questions or we can assist you in any way, please contact Keith Estes at 858-437-1191 or email him at dke.ecmc@gmail.com or Fred Nagel at 619-647-1304, email frednagel@gmail.com.

Respectfully, The Golf Committee: Keith Estes, Fred Nagel, Laura Parker

SPONSORSHIP OPPORTUNITIES:

REGISTRATION BAR SPONSORS	\$500. each
HAPPY HOUR FOOD SPONSORS	\$400. each
HAPPY HOUR BAR SPONSORS	\$350. each
DRINK CARTS / BEVERAGE STATIONS	\$400. each
HOLE SPONSORS / EXHIBITOR SPONSORS	\$250. each
GAME SPONSORS (multiple)	\$150. each

Fax this completed form to **Laura Parker at 619-278-6604**
or **619-297-5510** or email to lparker@roelcsi.com to hold your place.

Then follow up with your **check made payable to**
“ASPE San Diego Chapter 4”
c/o **Laura J. Parker, CPE**
3202 Via Arcilla, San Diego, CA 92111

SPONSOR REGISTRATION FORM

Cannot guarantee certain signage after February 5th but will do our best to get your name out there!

SPONSORSHIP REQUESTED _____

NAME _____

ADDRESS _____

CITY _____ **STATE** _____ **ZIP** _____

PHONE (____) _____ **EMAIL** _____

AMOUNT ENCLOSED \$ _____ **Check #** _____

SORRY, WE DO NOT TAKE CREDIT CARDS

Current Sponsors

Balfour Beatty
Construction



 ***Baker* Electric, inc.**

4 Generations since 1938

 **Harris Rebar**



ASPE SAN DIEGO CHAPTER 4

On Friday, March 16, 2012 @ 12:00 PM

ASPE San Diego Chapter 4

will hold its Sixth Annual Golf Tournament entitled

“Growth Through Mentoring and Education”

This major fund-raising event will be held at

Riverwalk Golf Club

centrally located in Mission Valley. The greens are kept perfectly maintained, and the beautiful setting makes it a great escape from our estimating world. The 2012 golf tournament promises to be an absolutely fun and enjoyable day in the sun with a great social time after!

We'll have bigger & better raffle prizes as well, so don't miss out!!

Proceeds will benefit ASPE Programs

focusing mainly on donations to

**Construction Tech Academy, the National ASPE Scholarship,
and our Local Education Scholarships**

benefiting our up-and-coming future estimators
and other construction-related students.

We offer scholarships for our On-Line Estimating Academy
as well as construction curricula at our local colleges and universities.

We hope you will all join us for a relaxing and fun day!!

With appreciation, The Golf Committee:

Fred Nagel

Laura Parker

Keith Estes

FACT SHEET
2012 ASPE GOLF TOURNAMENT
“Growth Through Mentoring and Education”

DATE: **Friday, March 16, 2012 @ 12:00 P.M.**
11:00 A.M. Registration
12:00 P.M. Tee Off - Shotgun Start
*** Grill opens at 10:30 A.M. for those who want to come early.**
Grill Ticket can be used for a Burger, Deli Sandwich, or Hot Dog and Chips.
4:30 P.M. Happy Hour Food, Program, Prizes & Raffle Drawing

LOCATION: **Riverwalk Golf Club**
1150 Fashion Valley Road *(directly across from the T&C Convention Center)*
San Diego, California 92108
619-296-GOLF

COST: **\$175.00 per Player** (discounted \$650.00 per foursome paid together)
(includes lunch (grill ticket), happy hour food, green fees, shared golf cart, range balls, 4 drink tickets, happy hour food, and giveaways)
18-Hole, 4-Man Scramble Event

INFORMATION: **Keith Estes 858-437-1191 DKE.ECMC@gmail.com**
Fred Nagel 619-647-1304 FredNagel@gmail.com

PLAYERS REGISTRATION FORM

Deadline is Friday, February 1, 2012 ... Please email Keith Estes to hold your spot.

Please NOTE if it is a PREFERRED FOURSOME.

	Name	Phone & Email	Handicap
1)	_____	_____	_____
2)	_____	_____	_____
3)	_____	_____	_____
4)	_____	_____	_____

Quantity _____ @ \$175.00 each = \$ _____ Check # _____
(Discounted \$650.00 per foursome paid together)

SORRY, WE DO NOT TAKE CREDIT CARDS.

Fax this completed form to **Laura Parker at 619-278-6604, 619-297-5510** or email to
lparker@roelcsi.com

Then follow up with your **check made payable to “ASPE San Diego Chapter 4”**

c/o Laura Jean Parker, CPE

3202 Via Arcilla, San Diego, CA 92111